

COMMISSIONS 27 AND 42 OF THE IAU
INFORMATION BULLETIN ON VARIABLE STARS

Number 5247

Konkoly Observatory
Budapest
26 March 2002

HU ISSN 0374 – 0676

A NEW SHORT PERIOD VARIABLE STAR IN CYGNUS

STARK, M.A.¹; TAYLOR, J.M.²

¹ The Pennsylvania State University, PA USA; Kitt Peak National Observatory (KPNO) Research Experience for Undergraduates (REU) 1998, Tucson AZ USA;
e-mail: stark@astro.psu.edu

² Harvard University, MA USA; National Solar Observatory (NSO) REU 1998, Tucson AZ USA;
e-mail: jmtaylor@fas.harvard.edu

Name of the object:	
GSC 3948:1963	
Equatorial coordinates:	Equinox:
R.A. = 20 ^h 03 ^m 04 ^s .3 DEC. = +59°06'54"0	2000
Observatory and telescope:	
Kitt Peak National Observatory, 0.9m telescope	
Detector:	T2KA CCD, 2048 × 2048 pixels
Filter(s):	B
Date(s) of the observation(s):	
1998.07.10, 11, 28, 30, 31	
Comparison star(s):	large ensemble
Check star(s):	large ensemble
Transformed to a standard system:	No
Availability of the data:	
upon request	
Type of variability:	DSCT
Remarks:	
Period of 0.05589 ± 0.00001 days with an amplitude of about 0.14 ± 0.01 mag in B. The descending branch is steeper than the ascending branch.	

Acknowledgements:

These observations were made as part of the Research Experience for Undergraduates (REU) programs at the National Optical Astronomy Observatories (NOAO) and the National Solar Observatories (NSO), both of which were funded by the National Science Foundation. We would like to thank Dr. Nigel Sharp of NOAO, and the participants of the 1998 NOAO and NSO REU programs for their help with the observations; and Dr. Tom Kinman of NOAO for his help with the classification.

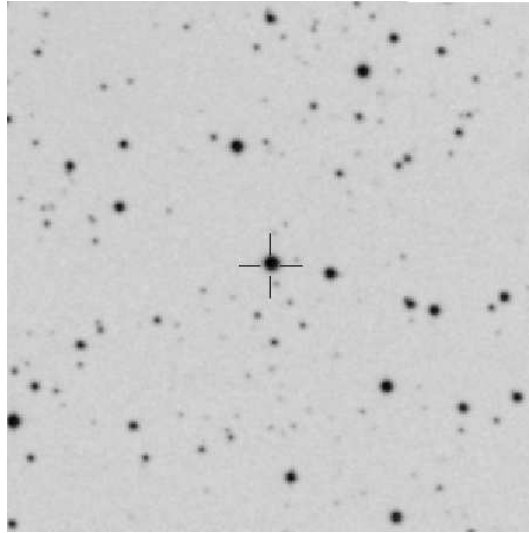


Figure 1. Finding chart for GSC 3948:1963 ($5'0 \times 5'0$) from The Digitized Sky Survey. North is up and East is to the left.

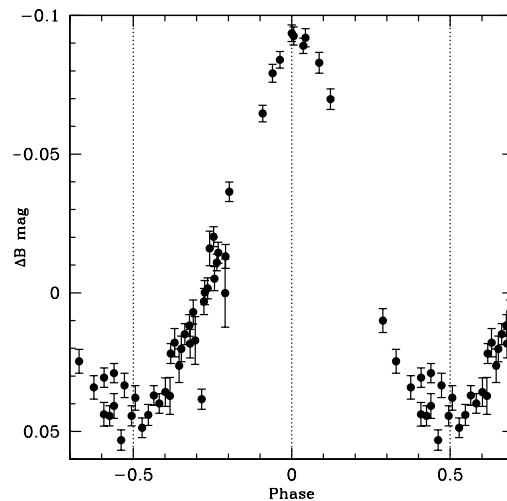


Figure 2. Differential *B* light curve for GSC 3948:1963 using a period of 0.05589 days (1.34136 hours).