

COMMISSIONS 27 AND 42 OF THE IAU
INFORMATION BULLETIN ON VARIABLE STARS

Number 4004

Konkoly Observatory
Budapest
18 March 1994
HU ISSN 0324 - 0676

V447 Cas = NSV 269

During my work on *PICA project* (= Precise Identification and Coordinate Adjustment of about 7000 variables) I have found that *V447 Cas* is identical with *NSV 269*.

V447 Cas = Wr 176 was discovered by Weber (1968). His paper contains basic information together with finding chart. Although poorly studied, this star has received its final designation in 1970 (Kukarkin et al., 1970).

NSV 269 = S 10151 was discovered by Hoffmeister (1967a) in the same time as *Wr 176*. Fortunately finding chart for this star was also published (Hoffmeister, 1967b). No final designation was accepted for this star and it was included into New Catalogue of Suspected Variable Stars (Kholopov et al., 1982).

While working on field variable stars around *NZ Cas* I have noticed that both above mentioned charts refer probably to the same star. Additional check has confirmed this, showing also the reported coordinates of both stars being somewhat off the star's real position. As this star is identical with GSC 3667.0737 the correct coordinates were easily found (see Table 1). Finding chart (see Figure 1) was adapted from Atlas Stellarum (Vehrenberg, 1970).

Following cross-identifications are valid : *V447 Cas = Wr 176 = S 10151 = GSC 3667.0737*

Name	Position (B1950)				Position (J2000)				Type	Max mag	Min mag	Phot. system
	h	m	s	° ' "	h	m	s	° ' "				
NSV 269	00 40 57		+59 35		00 43 52		+59 51		LB	12.5	13	p
V447 Cas	00 41 13		+59 33		00 44 08		+59 40		LB	12.5	14.0	p
GSC 3667.0737					00 43 43.81		+59 50 12.9			9.8		J

Table 1: Comparative table of *original* data for NSV 269, GSC 3667.0737 and V447 Cas. Data concerning NSV 269 are from NSV, data for V447 Cas are from GCVS and data for GSC 3667.0737 are from GSC.

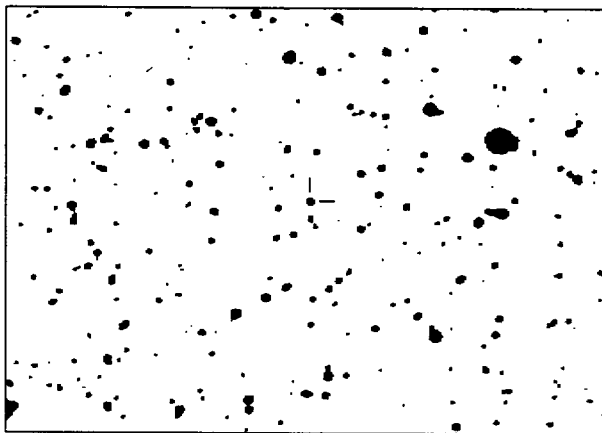


Figure 1: Finding chart for V447 Cas = NSV 269. The chart covers about 40' x 30' with north up. Variable is marked with two short lines.

Jan Mánek
Štefánik Observatory
Petřín 205
118 46 Praha 1
Czech Republic
e-mail: observ@earn.cvut.cz

References:

- Guide Star Catalogue v1.1: 1992, The Space Telescope Science Institute, Baltimore, Maryland, USA. On CD-ROM.
Hoffmeister, C.: 1967a, MVS 4, Heft 3, 39
Hoffmeister, C.: 1967b, AN 290, Heft 1/2, 43
Kholopov, P.N.: 1982, New Catalogue of Suspected Variable Stars, Nauka, Moscow
Kholopov, P.N.: 1985, General Catalogue of Variable Stars, 4th ed., Nauka, Moscow
Kukarkin, B.V., Kholopov, P.N., Perova, N.B.: 1970, IBVS 480
Vehrenberg, H.: Atlas Stellarum 1950.0, Treugesell Verlag KG, Düsseldorf
Weber, R.: 1968, IBVS 287