

COMMISSIONS 27 AND 42 OF THE IAU  
INFORMATION BULLETIN ON VARIABLE STARS

Number 3779

Konkoly Observatory  
Budapest  
29 September 1992

HU ISSN 0324 - 0676

**NSV 12006 – NO EVIDENCE FOR ERUPTIONS ON  
SONNEBERG PLATES**

Solovyov (1949a) announced the discovery on a single plate of a possible Nova Aquilae 1949 (= NSV 12006). Several attempts have been made since then to check or disprove the reality of this image or to confirm the presence of an unusual object at the given position: Schaefer (1987), Wenzel (1987), Karnashov and Moskalenko (1988), Schaefer (1990), Greiner and Wenzel (1990). The last-mentioned authors examined Solovyov's original plate by a special microscopic technique using reflected light and came to the conclusion that the object shows all features of a real stellar image.

Therefore we inspected the location of the object on about 3000 suitable plates of the Sonneberg collection in order to possibly detect further eruptions. The material comprises 2520 plates of the sky patrol taken between 1926 and 1992 mainly by P. Ahnert, H. Huth, and B. Fuhrmann (exposure time 30 to 60 minutes, threshold  $12^m$  to  $14^m.5$ ) and 474 plates centered at  $\delta$  Aql and exposed at the astrographs with the dimensions 17/120 cm, 40/190 cm, and 40/160 cm by C. Hoffmeister, R. Brandt, G. Richter et al. in the years 1928 to 1992, with major gaps (exposure time as above, threshold  $15^m$  to  $17^m.5$ ).

No eruption could be discovered.

There remains, however, some obscurity concerning the position: 1. The diameter of the image on the Dushanbe plate is about  $40''$ . 2. Karnashov and Moskalenko (l. c.) gave an accuracy of their co-ordinates of  $\pm 1''$ . 3. These co-ordinates exactly equal those of Solovyov (1949b), despite a difference of the equinoxes of 1 year (1950.0 and 1949.0).

About  $10''$  to the west of Karnashov and Moskalenko's position a star of  $16^m.5$  is to be seen on the POSS and on numerous astrographic plates of ours. To this star (marked with two strokes in our map), which lies well within the boundaries of Solovyov's image (circle in the map), the authors just quoted did not pay attention, probably because it is situated outside their error box. Nevertheless, as a precaution we checked it, but could not find any conspicuous variability.

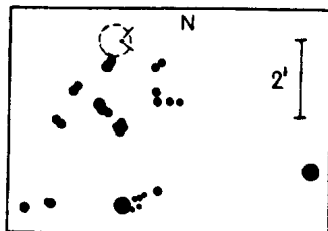


Figure 1

Part of this work has been supported by the Bundesministerium für Forschung und Technologie under contract no. 05-5S0414.

W. WENZEL  
Sternwarte O-6400 Sonneberg, FRG

C. GLAUBITZ  
Physikalisches Institut der  
Universität  
O-7010 Leipzig, FRG

J. GREINER  
Max-Planck-Institut für  
Extraterrestrische Physik  
W-8046 Garching, FRG

References:

- Greiner, J., Wenzel, W. : 1990, Proc. Workshop Gamma-ray Bursts, Taos  
Karnashov, A. N., Moskalenko, E. I. : 1988, *Astron. Tsirk.* No. 1529  
Schaefer, B. E. : 1987, I.B.V.S. No. 3082  
Schaefer, B. E. : 1990, *Astrophys. J.*, **353**, L25  
Solovyov, A. V. : 1949a, *Astron. Tsirk.* No. 87  
Solovyov, A. V. : 1949b, *Astron. Tsirk.* No. 88  
Wenzel, W. : 1987, I.B.V.S. No. 3114