

COMMISSION 27 OF THE I. A. U.
INFORMATION BULLETIN ON VARIABLE STARS
Number 3110

Konkoly Observatory
Budapest
6 November 1987
HU ISSN 0374-0676

POSITIONS AND FINDING CHARTS OF
NOVA HERCULIS 1987 AND NOVA SAGITTARII 1987*

The Reference Catalogue and Atlas of Galactic Novae (Duerbeck 1987) contains positions, finding charts and additional information for 277 novae and related objects complete to December 31, 1986. Positions and finding charts of more recent novae will be published irregularly in the IBVS. This first supplement contains positions and finding charts of N Her 1987 and N Sgr 1987.

Direct plates of the fields of the two objects were taken with the GPO astrograph of ESO La Silla on 098 emulsion + RG 630 filter. The plates were measured on the ESO Optronics 3000, using SAO stars as astrometric standards. Details of the observations and the nova positions are given in Table 1. Furthermore, the prenova candidates were measured on POSS and ESO/SRC sky atlas plates. The results are given in Table 2. The magnitudes were estimated using the image diameter calibrations by King and Raff (1977) and King et al. (1981). Figs. 1 and 2 are finding charts, prepared from the POSS blue (103a-0 emulsion) and SRC (IIIa-J emulsion + GG395 filter) sky atlas plates. They cover regions of 4!3 x 4!3.

The image of the prenova Sgr 1987 appears double on the magnified photograph. However, only the position of a single image could be measured. The slight difference between the right ascensions of the nova and the prenova indicates that the following and brighter component of the suspected close double star should be identified as the outburst object.

*Based on observations collected at the European Southern Observatory, La Silla, Chile

2

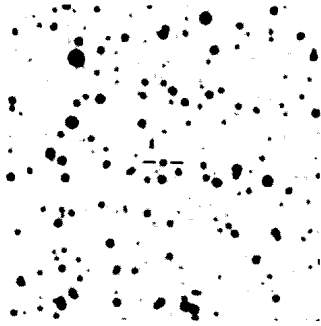


Figure 1

Finding chart for Nova Her 1987 (© 1960 National Geographic Society - Palomar Sky Survey. Reproduced by permission of the California Institute of Technology)

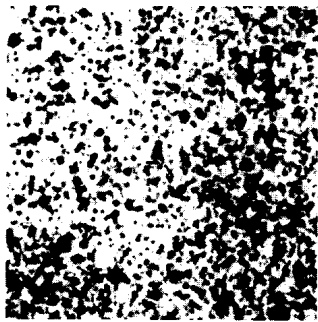


Figure 2

Finding chart for Nova Sgr 1987 (© Royal Observatory Edinburgh). On both charts, north is on the top, west to the right

Table 1. Nova positions on GPO plates

Object	GPO plate No.	Date	RA (1950)	Decl. (1950)
N Her 1987	11081	87 July 5.20	18 ^h 41 ^m 26 ^s .71	+15°16'13".3
N Sgr 1987	11087	87 July 8.11	17 56 29.08	-32 16 12.9

Table 2. Prenova positions on sky atlas plates

Object	Sky atlas plate	magn.	RA (1950)	Decl. (1950)
N Her 1987	POSS 287 O	18.0p	18°41' 26.73	+15°16'13.3
N Sgr 1987	SERC 456 J	≈21.5j	17 56 29.21	-32 16 12.6

Acknowledgement. I thank the California Institute of Technology and the Royal Observatory Edinburgh for permission to reproduce sky atlas plates.

HILMAR W. DUERBECK
 Astronomisches Institut
 der Universität Münster
 Wilhelm-Klemm-Str. 10
 D-4400 Münster, F.R.G.

References:

- Duerbeck, H.W. 1987, A Reference Catalogue and Atlas of Galactic Novae, Dordrecht: Reidel (also published in Space Sci. Rev. 45, 1).
- King, I.R., Raff, M.I. 1977, Publ. astr. Soc. Pacific 89, 120.
- King, D.R., Birch, C.I., Johnson, C., Taylor, K.N.R. 1981, Publ. astr. Soc. Pacific 93, 385.