

COMMISSION 27 OF THE I. A. U.
 INFORMATION BULLETIN ON VARIABLE STARS

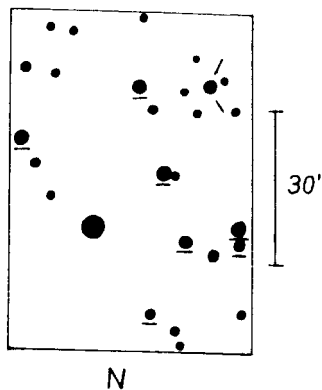
Number 2585

Konkoly Observatory
 Budapest
 13 September 1984
 HU ISSN 0374 - 0676

NOVA V 906 OPHIUCHI REDISCUSSED

By a letter of Dr. N. Samus', Astronomical Council of the USSR, our attention was directed to the insufficient map of the surroundings of V 906 Oph published in *Mitt. Veränderl. Sterne*, 2, p.166. Below a better chart is given. We add a complete list of the, partially revised, estimates on all patrol exposures available at Sonneberg. The near-edge distortion of the image of the nova on the plates makes a linking of the comparison stars to a standard field impossible. Instead, HD ptg. magnitudes of the stars underlined in the map were directly used.

J.D.	m _{RG}
243...	
4237.31	>11. ^m 3
39.41	9.8
40.31	9.3
41.30	9.6
42.40	10.1
44.32	9.9
44.39	9.9
45.40	10.0:
46.28	10.4
46.43	9.9
48.29	≥10.1
48.44	10.0
50.40	10.3
62.28	11.5
64.34	11.0:
69.39	>11.8



Probably the nova has been caught on its rise at 4239.41. The quiescent state may easily be near $B = 20^m$.

W. WENZEL
 Sternwarte Sonneberg
 Zentralinstitut für
 Astrophysik der Akademie
 der Wissenschaften der DDR