

COMMISSION 27 OF THE I. A. U.
INFORMATION BULLETIN ON VARIABLE STARS

Number 2420

Konkoly Observatory
Budapest
19 October 1983
HU ISSN 0374-0676

TWO NEW VARIABLE STARS IN THE FIELD OF NGC 6946

Two new variable stars have been discovered on 26 blue plates taken with a 36 cm telescope in a field of one square degree around the galaxy NGC 6946 during the period between July 1964 and September 1966.

Figure 1 shows the finding charts: north is at the top, the side is 15'.

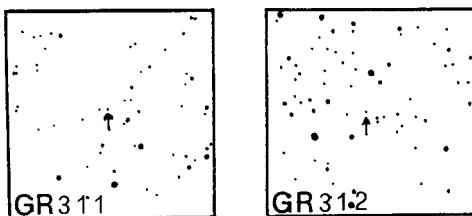


Figure 1

GR 311.- The position 1950 is R.A. = $20^{\text{h}} 29^{\text{m}} 47^{\text{s}}$, $D = + 60^{\circ} 10'.5$. This star is very likely a semiregular variable. The observations suggest a period of 145 days. A definite maximum has been observed at JD 2439054 (14.9 mph). The photographic range is from 14.9 and < 15.5 .

GR 312.- The position 1950 of this eclipsing variable (EA) is R.A. = $20^{\text{h}} 35^{\text{m}} 17^{\text{s}}$, $D = + 59^{\circ} 57'.0$. Two minima have been observed respectively at JD 2438941.423 (15.2) and JD 2438967.436 (< 15.3). The period is very likely $26.01/n$ days. The star has an observed range from 14.5 and < 15.3 .

In the same field we have observed also the following variables.

DT Cep.- Eclipsing variable. Only a minimum at the date JD 2439051.335 (15.0) has been observed. The $O-C = -0.143$ with the elements given by W. Gotz (VVS 2, n.5, 1956).

V778 Cyg.- Slow variations of light between 13.4 and 15.1. Irregular variable.

G. ROMANO AND M. PERISSINOTTO
Istituto di Astronomia
Università di Padova
Italy