

COMMISSION 27 OF THE I. A. U.  
INFORMATION BULLETIN ON VARIABLE STARS

Number 2369

Konkoly Observatory  
Budapest  
13 July 1983  
HU ISSN 0374-0676

VARIABLE STAR DISCOVERED NEAR  $\delta$  SAGITTARII

A previously uncatalogued longperiod variable star has been discovered near  $\delta$  Sagittarii via the photographic plate collection of the Harvard College Observatory. The star's 1900 coordinates are 18h 14m 23s and  $-29^{\circ} 54' 2''$ . Figure 1 is a finding chart for the variable. The bright

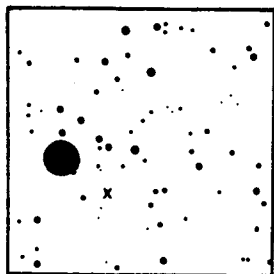


Figure 1

The scale is roughly 20' to the side.  
North is at the top, and east is at the left.  
The position of the variable is represented  
by an x.

star in the field is  $\delta$  Sagittarii. The variable's period is 230.5 days  $\pm 0.5$  day, and the epoch of maximum is JD 2433474. The photographic magnitude at maximum is 13.8, and at minimum is fainter than 16.0. The star was observed on plates taken on JD 2423907 through JD 2436751, with the majority of observations on JD 2423907 through JD 2426556.

This work was funded by National Science Foundation grant number AST-80-05162A, and was done under the direction of Dr. Emilia P. Belserene.

KAREN A. GLORIA  
Maria Mitchell Observatory  
Nantucket, MA. 02554  
U.S.A.