

COMMISSION 27 OF THE I. A. U.
INFORMATION BULLETIN ON VARIABLE STARS

Number 2363

Konkoly Observatory
Budapest
30 June 1983
HU ISSN 0374-0676

OBSERVATIONS OF AT Cnc IN THE YEARS 1982 AND 1983

The star which is probably of cataclysmic type (Meinunger, 1981) was inspected on 18 blue-sensitive plates (ORWO-ZU 21 + GG13 + BG12) obtained with the Schmidt camera 50/70/172 cm of Sonneberg Observatory covering the time intervals between 1982 April 14 and April 26 and 1983 February 15 and March 13. These observations are listed in Table I. The light curve of the star which shows variations over the whole amplitude between $m_B = 12.6^m$ and $m_B = 15.9^m$ is given in Figure 1.

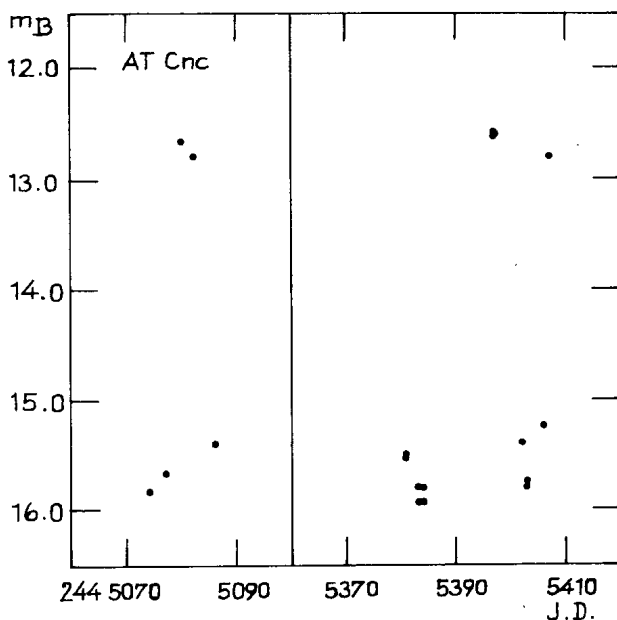


Figure 1

Table I

J.D. 244....	m_B	J.D. 244....	m_B
5074.352	15.83	5384.421	15.80
5077.363	15.67	5384.475	15.93
5080.351	12.66	5397.338	12.59
5082.356	12.79	5397.365	12.59
5086.352	15.39	5402.404	15.39
5381.407	15.53	5403.380	15.80
5381.436	15.53	5403.408	15.74
5383.392	15.93	5406.333	15.25
5383.531	15.80	5407.331	12.79

The used sequence of comparison stars in B is shown in the finding chart of Figure 2.

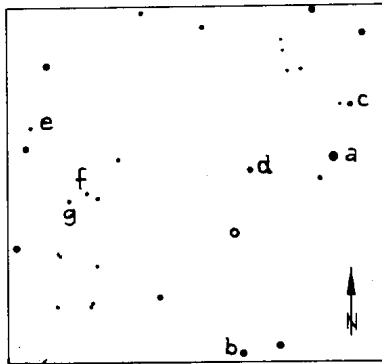


Figure 2

Table II

Comp. star	m_B	Comp. star	m_B
a	12.25	e	14.97
b	12.93	f	15.67
c	13.62	g	16.45
d	14.30		

The magnitudes of these stars which include those given by Romano and Perissinotto (Romano, Perissinotto, 1968) were obtained on 2 plates by linking to the UBV sequence of the Praesepe cluster and are given in Table II.

W. GÖTZ

Akademie der Wissenschaften
der DDR, Zentralinstitut für
Astrophysik, Sternwarte Sonneberg

References:

- Meinunger, L., 1981, Mitt. Veränd. Sterne Sonneberg 9, p.59
Romano, G., Perissinotto, M., 1968, Padova Publ. 151, p.9