

COMMISSION 27 OF THE I. A. U.
 INFORMATION BULLETIN ON VARIABLE STARS

Number 2161

Konkoly Observatory
 Budapest
 1982 June 15

HU ISSN 0374-0676

OBSERVATIONS OF SOME VARIABLE STARS

During the period June 1965 - August 1970 56 blue plates (Zenith Astro-
 nomical and Scientia 67 A 50) have been taken with the 135 mm astrograph on
 the field centered at RA = 20^h13^m; D = +47^o (1950). The results of observa-
 tions of some variable stars in this field are given in this paper.

XX Cyg - Four maxima of this RRs star were observed on:

JD	m	O - C
24...		
38939.421	11.2	+0. ^d 007
961.396	11.1	- .001
40124.346	11.3	+ .007
152.247	11.4	- .008

The phases have been obtained with the elements of the General
 Catalogue. The star varied between 11.3 and 12.5 magn.

BW Cyg - Semiregular variable. During the period of observation this star
 varied between 13.0 and 14.2 magn. The observations are satisfied
 by the following elements: max = 2438941 + 173^d.

The epochs of maximum are:

JD	m	O - C
24...		
38941	13.0	0 ^d
39296	13.0	+ 9
40124	13.7	-28
40504	13.4	+ 6

BX Cyg - Probably an irregular variable star (12.8-14.1 magn. in our plates).

The epochs of maximum are:

JD	m	JD	m
2438940	13.1	2439680	13.0
39023	12.9	40415	13.0
39350	13.0		

CN Cyg - Mira star. Only two maxima have been observed on: JD 2439026
 (8.4) and 2440955 (8.6) in accord with the elements of the General
 Catalogue.

V 786 Cyg - Irregular variable star with a marked red colour. This star had nearly constant brightness most of the time and showed some rapid variations of $0^m.5-0^m.6$ with a cycle length of two to five days.

UU Cep - No maxima of this semiregular variable have been observed. The fitting of the light curves suggests the following new improved elements:

$$\max = 2440768 + 372^d.7.$$

HI Cep - Eclipsing variable with unknown elements. The observations near the minima give:

JD	m
24...	
38935.415	13.7
40150.249	13.0
40504.273	13.5

The star varies between 12.0 and 13.7 mpg.

GR 306 - This new suspected variable star has been discovered on 63 films (Tri X + GG 14) taken with two Schmidt telescopes 25/30/75 cm in Pegasus.

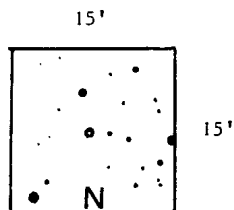


Figure 1

Its position is $RA = 22^h 07^m 26^s$; $D = +32^{\circ} 20' 5''$ (1950.0). Very likely this star belongs to the RR Lyrae type. The photovisual range is 13.6 - 14.1. No elements have been derived. The finding chart is shown in Figure 1.