

COMMISSION 27 OF THE I. A. U.  
 INFORMATION BULLETIN ON VARIABLE STARS

Number 1999

Konkoly Observatory  
 Budapest  
 1981 August 4  
 HU ISSN 0374-0676

NEW VARIABLE STARS IN THE FIELD AROUND MV LYRAE

A further survey of the  $6^{\circ} \times 6^{\circ}$  field centered on MV Lyrae, previously examined by G. Romano (IBVS N<sup>o</sup>645) on the material obtained with the 67/90/210 cm Schmidt telescope of Asiago, has led to the discovery of four new variable stars (GR 306, 307, 308, 309).

The position 1950.0 of these stars and their characteristics are listed in Table I. The magnitudes are B.

Table I

Star	R.A.	D	max	min	Type
GR 306	18 <sup>h</sup> 59 <sup>m</sup> 02 <sup>s</sup>	+44 <sup>o</sup> 11'	17.7	18.5	RR :
GR 307	19 03 11	+44 37	16.3	17.9	RR :
GR 308	19 14 03	+43 18	16.2	17.3	SR
GR 309	19 18 11	+43 43	13.6	18.5	M

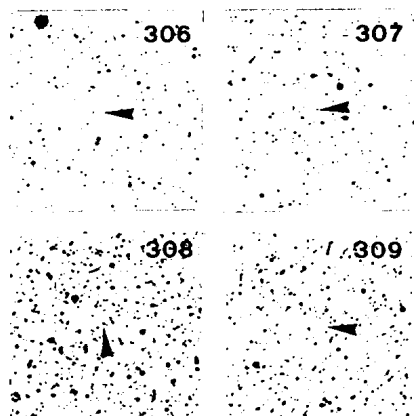


Figure 1

An intercomparison blue-infrared shows that the variables GR 306 and GR 307 are bluish, while GR 308 and 309 are very red. The finding chart is represented in Figure 1 (15' of side, north in the top).

G. ROMANO  
Istituto di Astronomia dell' Università  
di Padova