

COMMISSION 27 OF THE I. A. U.  
INFORMATION BULLETIN ON VARIABLE STARS

Number 1979

Konkoly Observatory  
Budapest  
1981 June 19  
HU ISSN 0374-0676

OBSERVATIONS OF VARIABLE STARS ACCIDENTALLY FOUND ON MINOR  
PLANET PATROL PLATES

While blinking plates for minor planets we have found a few stars obviously changing their brightness. They have mostly been identified as objects listed in the first catalogue of suspected variable stars (Kukarkin et al., 1951). Unless otherwise stated, the observations have been made with the 30cm f:5 astrograph of Hoher List Observatory.

1) UW Gem

Classified as an eclipsing binary there has been some confusion about its identification (Hoffmeister, 1944). Because no finding chart is available, Fig. 1 shows the variable and its surrounding stars. The brightest objects shown are BD+13<sup>o</sup>1377 (lower right) and BD+13<sup>o</sup>1378 (upper middle). The actual observations are

JD hel.	2444290.4200	$m_{pg}$	17 <sup>m</sup> .5
	2444291.4758		15 <sup>m</sup> .5

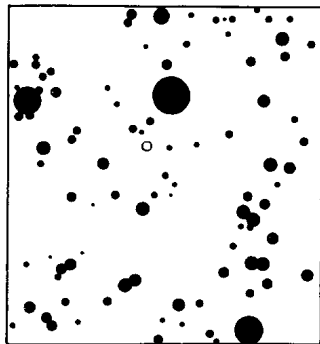


Fig. 1 Finding chart for UW Gem

## 2) CSV 2361 (Lib)

The star has been observed as follows:

JD hel. 2444369.4857	$m_{pg}$	14. <sup>m</sup> 5
2444369.5121		14. <sup>m</sup> 5
2444370.5141		15. <sup>m</sup> 5
2444371.4884		15. <sup>m</sup> 5

## 3) CSV 3422 (Oph)

The first four plates have been taken with the 30cm f:17 refractor of Hoher List Observatory by M. Geffert.

JD hel. 2443340.4211	$m_{pg}$	15. <sup>m</sup> 8
2443361.3988		15. <sup>m</sup> 0
2443364.4065		15. <sup>m</sup> 2
2443365.409		16. <sup>m</sup> 0
2444370.5847		15. <sup>m</sup> 6

## 4) CSV 4566 (Aql)

The star is bright on both prints of the Palomar Observatory Sky Survey.

JD hel. 2444369.5445	$m_{pg}$	14. <sup>m</sup> 8
2444370.5646		14. <sup>m</sup> 8
2444371.5626		15. <sup>m</sup> 5

5) Anon. (Lib) 1950.0  $15^h 07^m 9$   $-9^{\circ} 18'$ 

A finding chart is given in Fig. 2. The star marked by dashes is BD-8<sup>o</sup>3915. The variable seems to be faint on the

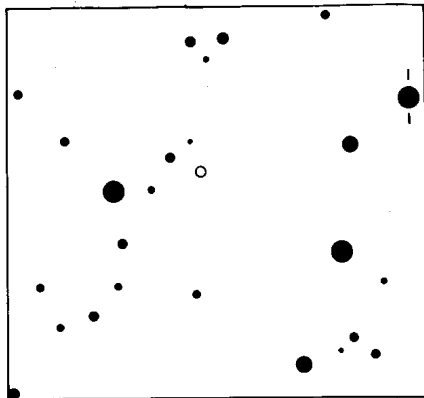


Fig. 2 Finding chart for the suspected variable in Libra

Atlas Stellarum by Vehrenberg and on the red print of the Palomar Observatory Sky Survey, but bright on its blue print.

JD hel. 2444370.4621	$m_{pg}$	$13^m.4$
2444370.4871		$13^m.6$
2444371.4607		$13^m.0$

Although none of the suspected variability types can be confirmed by these few observations, it can be concluded that all of the previously suspected variable stars are in fact variable on time scales of a few hours.

M. HOFFMANN

Observatorium Hoher List  
5568 Daun / Eifel, BRD

References:

Hoffmeister, C., 1944, Mitt. Veränderl. Sterne Sonneberg 81  
Kukarkin, B. W., Parenago, P. P., Jefremov, J. I., Kholopov,  
P. N., Catalogue of Suspected Variable Stars,  
Moskow 1951