

COMMISSION 27 OF THE I. A. U.  
INFORMATION BULLETIN ON VARIABLE STARS  
Number 1633

Konkoly Observatory  
Budapest  
1979 June 29

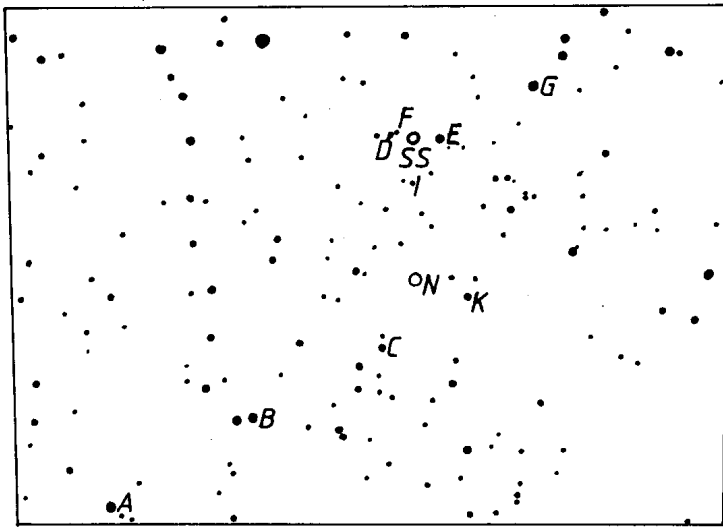
B V OBSERVATIONS OF NOVA CYGNI 1978 (V 1668 Cyg)

Between 7 Oct. 1978 and 19 Dec. 1978 photoelectric observations of the nova were made during 19 evenings even if the weather was not of high quality. The 75 cm telescope of the Wilhelm Foerster Observatory, Berlin, an uncooled 1P21 multiplier, an usual amplifier and Schott filters BG12+GG13 for the B-band and GG11 for the V-band were used.

The stars listed in Table 2 and identified in the Figure served as comparison stars. Table 1 gives the heliocentric Julian Date, the mean magnitude  $\bar{V}$  and its standard deviation, the mean colour  $\bar{B}-\bar{V}$  and its standard deviation and the number of individual measurements of the nova for each of the 19 evenings.

Except J.D. 2442828<sup>d</sup>, all measurements were done within half an hour. Consequently, nothing could be said about quick fluctuations as found by Margrave (IAUC 3296, 1978). The observations on J.D. 2443828<sup>d</sup> seem to indicate such short periodic fluctuations.

U. HOPP  
Wilhelm Foerster  
Observatory  
Munsterdam 90  
D-1000 Berlin - 41



Identification chart of the Nova Cyg 1978, SS Cyg and the used comparison stars. South at the top.

Table 1  
Daily means of N Cyg 1978 observations

Date (J.D.)	$\bar{V}$	$\overline{B-V}$	n
2443 789 <sup>d</sup> .325	9 <sup>m</sup> .06 ± 0 <sup>m</sup> .03	+0 <sup>m</sup> .29 ± 0 <sup>m</sup> .04	2
790.258	9.08 0.02	0.34 0.04	3
793.271	9.15 0.01	0.16 0.01	2
794.306	9.67 0.02	0.40 0.02	3
795.307	9.64 0.01	0.20 0.01	4
800.377	9.68 0.02	0.22 0.02	2
807.309	9.90 0.01	0.47 0.02	4
808.344	10.10 0.01	0.24 0.03	3
814.206	10.44 0.02	0.52 0.03	2
815.234	10.36 0.02	0.41 0.11	4
828.249	10.51 0.01	0.29 0.02	10
829.274	10.51 0.02	0.45 0.04	2
832.261	10.61 0.02	0.25 0.03	5
833.255	10.63 0.01	0.24 0.01	5
847.245	10.90 0.05	0.16 0.06	3
848.251	10.83 0.02	0.31 0.03	6
850.191	10.99 0.05	0.23 0.06	3
861.221		0.33 0.11	3
862.240	10.93 0.05	0.33 0.05	2

Table 2  
Comparison stars

Star	V	B-V
A	6 <sup>m</sup> .21	+0 <sup>m</sup> .18
B	6.72	-0.06
C	9.23	+0.13
D	9.72	+0.54
E	8.47	+1.20
F	10.73	+0.47
G	7.49	+1.84
I	9.57	+0.95
K	11.18	+0.53