

COMMISSION 27 OF THE I. A. U.
INFORMATION BULLETIN ON VARIABLE STARS
Number 1290

Konkoly Observatory
Budapest
1977 June 7

V1705 AND V1706 Sgr

Finder charts have not previously been published for the faint variable stars, V1705 and V1706 Sgr. Discovered by Hoffleit, their periods were determined by Jean Hales from her observations on Harvard plates taken between 1924 and 1953 (Hoffleit 1957). These stars have now been examined on Nantucket plates for the years 1957 through 1976. Both are about 14.9 pg at maximum, while the plate limit on the Nantucket plates for a star some 7° from the plate center is seldom better than 15.5. The revised ephemerides representing the observed maxima are

V1705 Sgr Max = 24 42250+142^dE SR

V1706 " Max = 38615+205 E M

The period for the semi-regular variable, V1705 Sgr, is the same as the one previously published; however, there appears to have been a shift in phase. The new period for V1706 Sgr (revised from 210.^d5:) satisfies both the old Harvard and the new Nantucket observations.

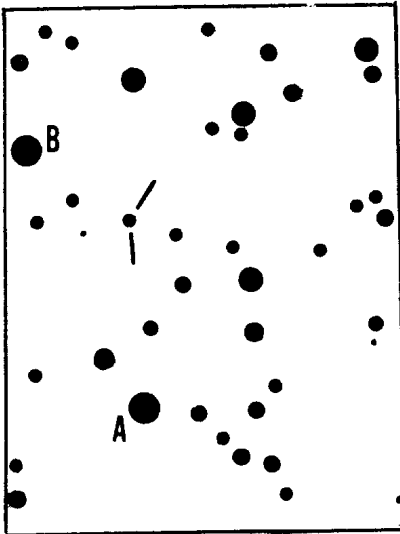
The letters on the finder charts represent BD stars in the -19° zone: A=5123, B=5121, C=5124 and D=5128. The charts cover approximately 10' x 14' and South is at the top.

DORRIT HOFFLEIT

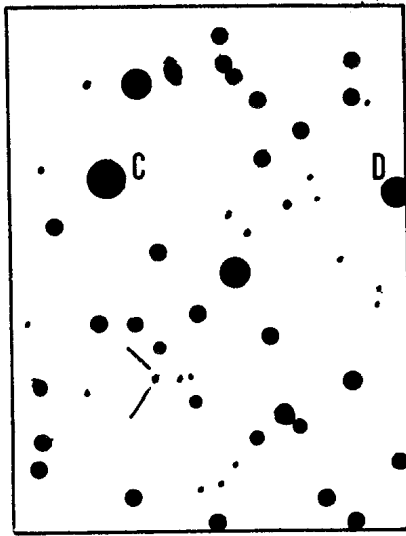
Maria Mitchell Observatory
Nantucket, Mass., U.S.A.

Reference:

Hoffleit, D. 1957 Astron. Jour. 62, 120



V1706 Sgr



V1705 Sgr