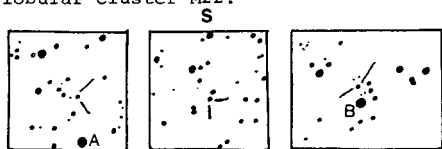


COMMISSION 27 OF THE I. A. U.
 INFORMATION BULLETIN ON VARIABLE STARS
 Number 1064

Konkoly Observatory
 Budapest
 1975 November 17

THREE LONG-PERIOD VARIABLES IN SAGITTARIUS

On the basis of over 500 observations on Nantucket plates taken between 1956 and 1975, the periods of two new variables have been determined and the period for one previously known one slightly revised. The last two columns of the Table give the initials of the person who discovered the variable followed by the initials of the one who determined the period: MB, Mary Brewster; DC, Deborah Carmichael; DH, D. Hoffleit; and PO, Pamela Owensby. In the finder charts for the new variables the bright star A is CoD -29°14752 and B is CoD -24°14640. The middle chart (approximately 10' x 10') is for V1701 Sgr which is approximately 20' following and 33' South of the center of the globular cluster M22.



	R.A. (1900)	Dec.	Max	min	JD	Period	Disc.	Comp.
Var 1	18 ^h 10 ^m 17 ^s	-30°02'.0	13:	(15	41930	217	PO	MB
V1701 Sgr	31 43	-24 32.6	13.6	(16.0	41950	252.3	DH	DH
Var 2	38 00	-24 50.0	13.7	14.7	38615	146	PO	DC

DORRIT HOFFLEIT
 Maria Mitchell Observatory
 Nantucket, Mass., U.S.A.