

COMMISSION 27 OF THE I. A. U.
INFORMATION BULLETIN ON VARIABLE STARS

Number 1063

Konkoly Observatory

Budapest

1975 November 17

TWO PECULIAR VARIABLE STARS: OX Cyg AND GR 128

OX Cygni (Figure 1) was discovered by W. Baade in 1933 who considered it as being a rapidly varying star of unknown type, varying between 15.6 and 16.2 pg. In the summer of 1973 Bonnie Buratti rediscovered this star and made step estimates of its brightness on about a thousand Nantucket plates. I have converted her estimates into approximate magnitudes, re-checked all the extreme observations and extended them to the more recent plates. From Figure 2 it appears that rapid variations are superposed over a slow, long period variation, somewhat similar to the behaviour of several symbiotic stars. We have been unsuccessful in finding a period for the rapid changes.

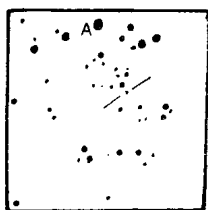


Figure 1. Finder chart for OX Cyg. Star A is BD+39^o3952.

GR 128 in Coma Berenices, discovered in 1973 by Pinto and Romano, has been examined at the request of Howard E. Bond, who points out that the originally published position is in error and gives the revised position as 11^h59^m36^s +28^o27'6 (1900). Figure 3 shows the Nantucket observations, covering the years 1964-1975. The curve is taken from the Pinto-Romano paper. For the earlier Nantucket observations the agreement is excellent; the later observations appear to be systematically about 0.5 mag. fainter than those previously published. The star is close to the edge of the Nantucket plates.

DORRIT HOFFLEIT
Maria Mitchell Observatory
Nantucket, Mass., U.S.A.

References:

- Baade, W. 1933, A.N. 249, 269
Pinto, G. and Romano, R. 1973, Padova Pub. No. 164

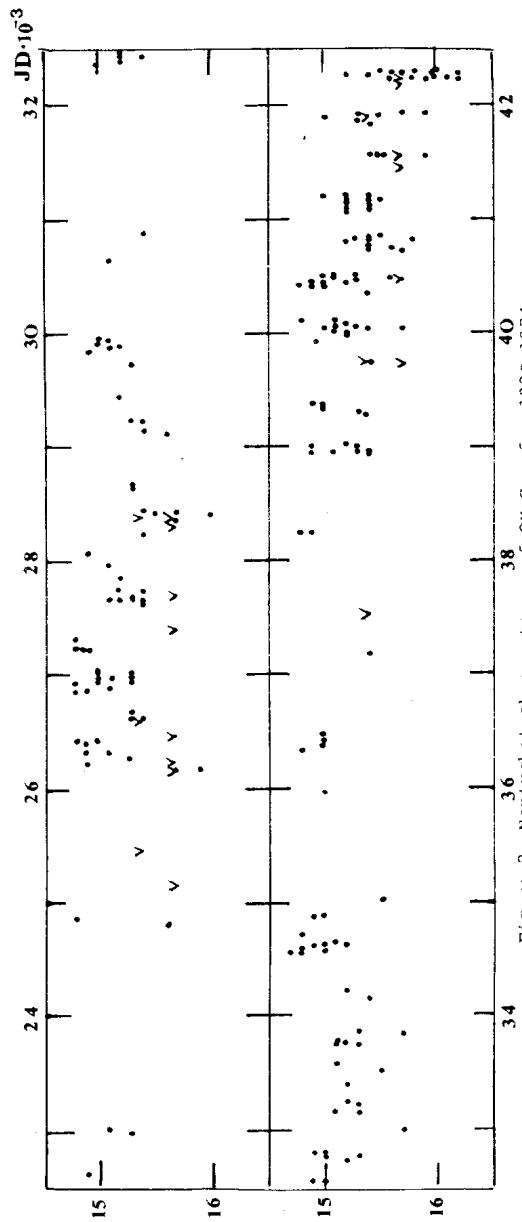


Figure 2. Nantucket observations of OX Cyg for 1920-1974.

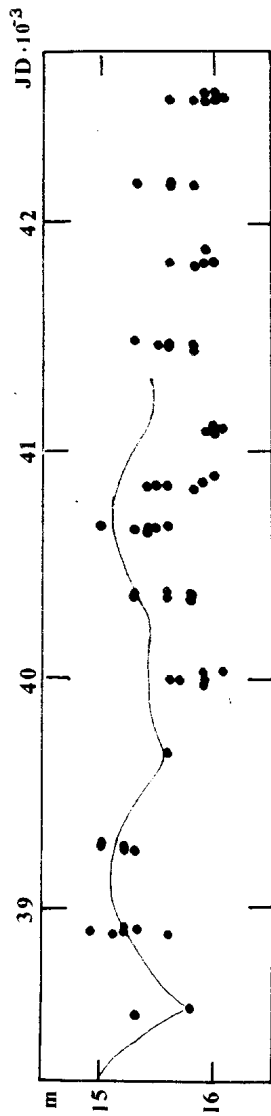


Figure 3. Nantucket observations of GR 128 compared with mean curve for Pinto-Romano observations.