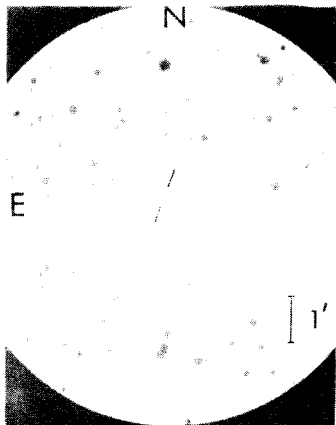


COMMISSION 27 OF THE I. A. U.
INFORMATION BULLETIN ON VARIABLE STARS
Number 1011

Konkoly Observatory
Budapest
1975 June 20

NOVA AURIGAE 1964

Recently, while scanning an objective-prism plate (Kodak IIa-O, 580 \AA mm^{-1} at Hy) taken with the Burrell Schmidt telescope of the Warner and Swasey Observatory on November 4 (U.T.) 1964, we found the spectrum of a nova having approximate 1900 coordinates $\alpha = 5^{\text{h}} 22^{\text{m}}.1$, $\delta = +33^{\circ} 14'$. At that time the star was near the 15th mag and showed in addition to hydrogen emission, strong [OIII] lines and N III $\lambda 4640$ indicating that it was in the advanced nebular stage of nova development, perhaps five or more magnitudes down from maximum light. Our identification chart, enlarged from Palomar Sky Survey chart 0-1315, shows the candidate for the prenova which we estimate at $m_{\text{pg}} \sim 18$. Unfortunately, there are no additional spectral or direct plates in our files covering this event.



N. SANDULEAK
Warner and Swasey
Observatory
1975 Taylor Road
East Cleveland, Ohio U.S.A.