

COMMISSION 27 OF THE I. A. U.
 INFORMATION BULLETIN ON VARIABLE STARS
 Number 946

Konkoly Observatory
 Budapest
 1974 November 29

PRELIMINARY CHART OF THE REGION OF NOVA SAGITTARII 1974

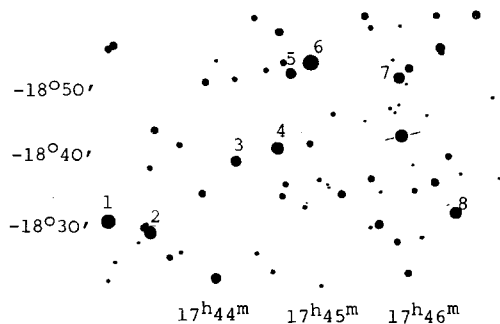
The chart by Marilyn Ogburn was made from plates taken with the 66 cm refractor of this observatory on October 20th and October 21, 1974. At that time, the Nova was 9.5 magnitude (photovisual).

The following precise position of Nova Sagittarii 1974 is reported:

UT Equinox 1950
 Nov. 11.979 17^h 45^m 44^s.07 - 18° 44' 41".6

Reference configuration: BD -18°4650
 BD -18°4648
 BD -18°4657
 BD -18°4659

with proper motions from the Yale Trans. Vol. 12, Part II.



Limiting magnitude ≈ 13 m_{pv}

Star	BD Designation	Star	BD Designation
1	-18°4637	5	-18°4646
2	-18°4640	6	-18°4648
3	-18°4643	7	-18°4650
4	-18°4644	8	-18°4652

RICHARD F. SCHMIDT
 Leander McCormick
 Observatory
 Charlottesville, Va.