

COMMISSION 27 OF THE I. A. U.
 INFORMATION BULLETIN ON VARIABLE STARS

NUMBER 705

Konkoly Observatory
 Budapest
 1972 August 3

Veröffentlichungen der Remeis-Sternwarte Bamberg
 Astronomisches Institut der Universität Erlangen-Nürnberg
 Band X, Nr.103

NEW SOUTHERN VARIABLE STARS

On sky patrol plates taken at the Southern Station of the Remeis-Observatory Bamberg at the Boyden Observatory, South Africa and at the Southern Station of the University of Florida Gainesville at the Mount John Observatory, New Zealand, the stars in the following list were found to be variable. None were found to be listed as suspected variables.

The brightness of these stars at maximum were estimated by comparison with standard stars in the Harvard-Groningen Atlas, Selected Areas (1965, A. BRUN and H. VEHRENBURG).

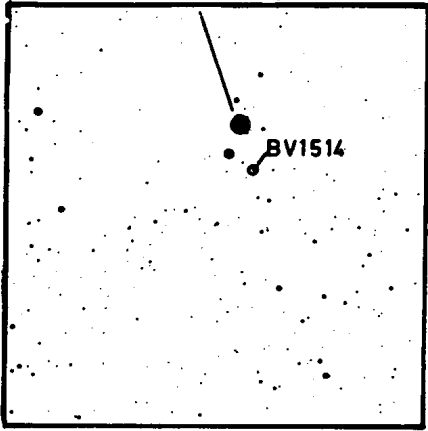
BV-Nr.	RA	Dec.	max. brightness pg	Ampl.
	1900.0			
BV 1514 Cha	10 ^h 45 ^m 42 ^s .3	-79°54'27"	10 ^m .6	0 ^m .9
BV 1515 Cha	= CAP -78°586 (9 ^m 7)			0.3
BV 1516 Mus	12 40 46.7	-70 32 18	11.7	0.5
BV 1517 Aps	= CAP-73°130? 8 ^m 1 = CoD-73°977 (6 ^m 9)			0.3
	= HD 127369 (8 ^m 4) K5			
BV 1518 Oct	15 00 02.9	-82 51 27	11.3	0.5
BV 1519 Aps	16 31 33.4	-76 36 44	12.0	0.5
BV 1520 Aps	= CAP -75°1408 (8 ^m 8) = CoD-75°1013 (6 ^m 5)			0.3
	= HD 164250 (9 ^m 1)K5			

Finding charts are 1° in declination, with south up.

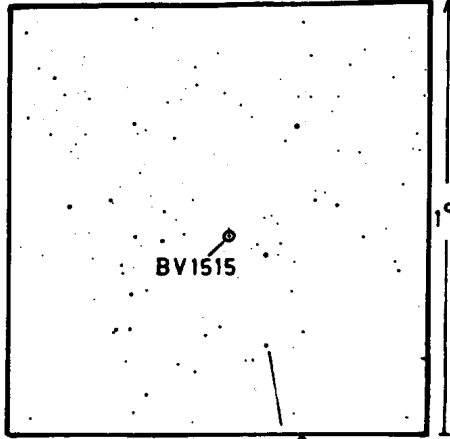
Bamberg, July 1972

D.H. MARTINS
 Remeis-Sternwarte Bamberg
 and University of Florida
 Gainesville

CAP -79° 556(4,8)

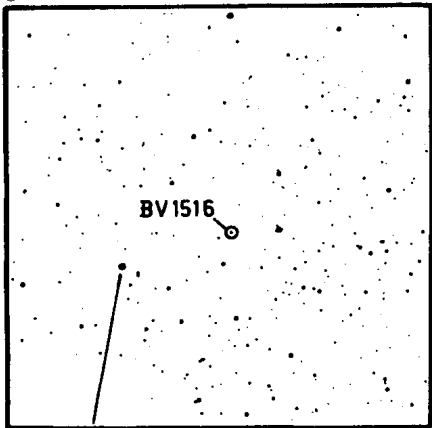


S



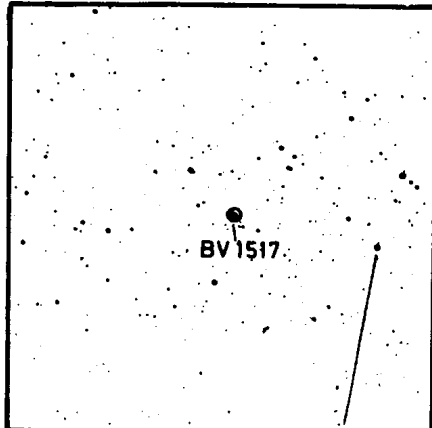
CAP -78° 647(95)

BV1516

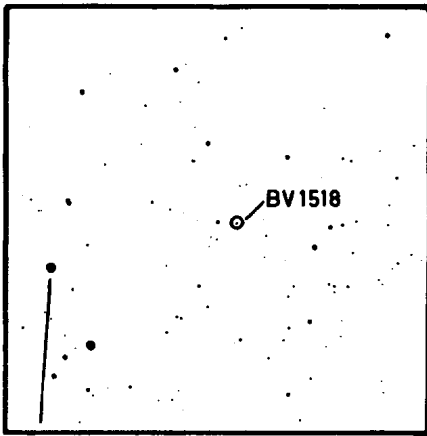


CAP -70° 1511(84)

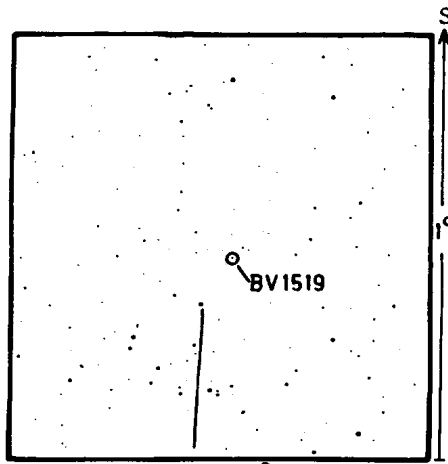
BV1517



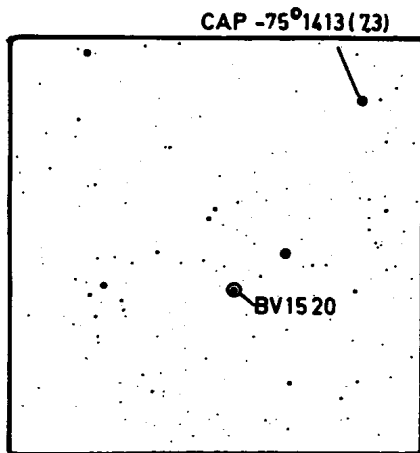
CAP -73° 1319(82)



CAP -82°629(70)



CAP-76°1169(92)



CAP -75°1413(73)