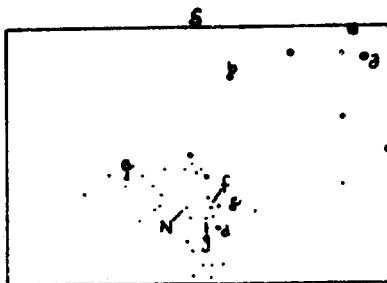


COMMISSION 27 OF THE I. A. U.  
 INFORMATION BULLETIN ON VARIABLE STARS  
 NUMBER 694

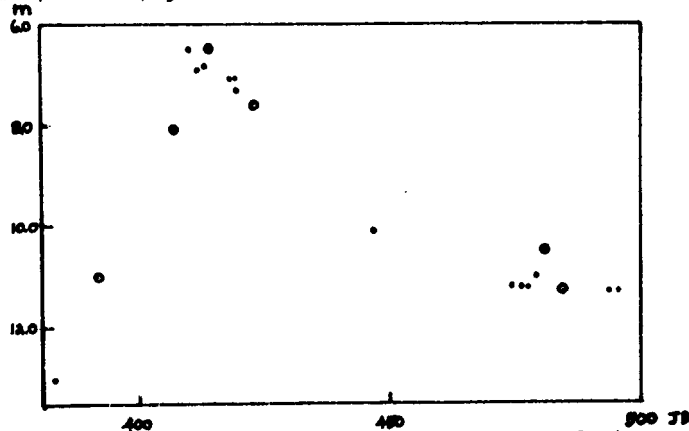
Konkoly Observatory  
 Budapest  
 1972 July 7

BATESON'S NOVA Sgr 1969



In IEVS 389 (1969) F.M. Bateson announced the discovery of a nova in Sagittarius. Estimates of the photographic magnitude have been made on 18 Nantucket plates taken during 1969, from J.D. 40382 to 40495. About 90 plates from previous years, 1957-1968, and about 25 for

1970-1972 show the magnitude to be fairly constant at about 13 mag. All of the magnitudes for the nova in 1969 are shown in the light curve, where dots represent the Nantucket estimates, the open circles Bateson's. The finder chart shows the comparison stars used here. Their adopted magnitudes, based on S.A. 158, are as follows: a 6.4, b 7.2, c 9.4, d 10.4, e 11.4, f 12.7, g 13.2.



We are indebted to the National Science Foundation under whose Research Participation Program for Undergraduates this work has been carried out.

PAMELA R. KNIGHT  
 Maria Mitchell Observatory  
 Nantucket, Mass., U.S.A.