

COMMISSION 27 OF THE I. A. U.  
 INFORMATION BULLETIN ON VARIABLE STARS  
 NUMBER 645

Konkoly Observatory  
 Budapest  
 1972 March 23

NEW VARIABLE STARS IN LYRA

A survey for variable stars in the field centered in RA= 19<sup>h</sup>04<sup>m</sup>; D= +43<sup>o</sup> has been carried out with the Schmidt telescope 65/90/210 cm of the Asiago Astrophysical Observatory. Sixteen new variables have been discovered. This communication reports some short notices on these stars.

The following Table 1 gives coordinates (1900), approximate photographic magnitudes at maximum and minimum and probable type. In Figure 1 are given the identification charts (5' of side, north in the top). During the research the suspect variable 8152 of the Kukarkin Catalogue (Kukarkin et al. 1965) has been also examined and has shown a variation between 13.2 and <18.6 mpg. The star is probably a long period variable.

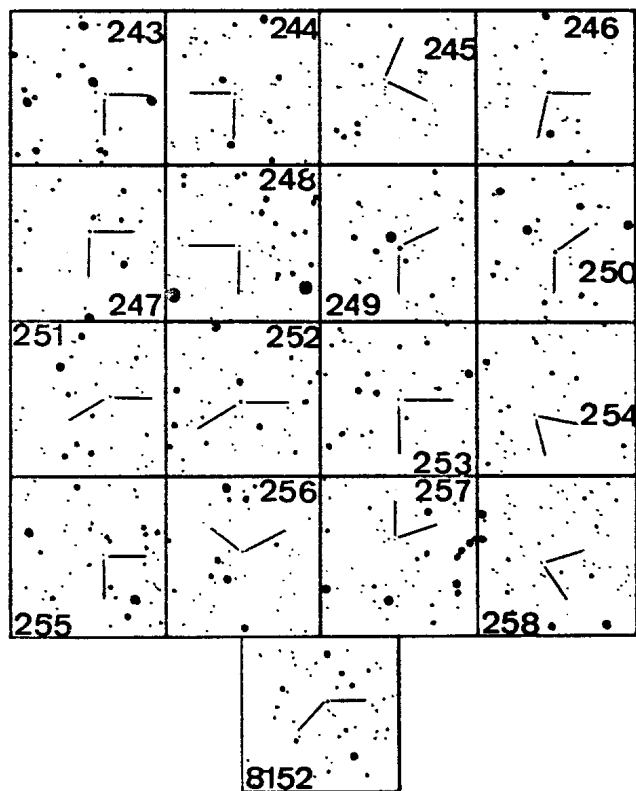
Table 1

Var.	R.A.	1900	D.	max.	min.	type
GR 243	18 <sup>h</sup> 51 <sup>m</sup> 51 <sup>s</sup>		+42 <sup>o</sup> 35'	16.0	17.1	C
GR 244	18 55 04		+41 27	15.3	17.3	RR
GR 245	18 55 54		+42 36	16.2	18.0	C
GR 246	18 56 34		+45 14	14.2	18.0	LP
GR 247	18 57 01		+44 18	17.2	< 18.5	UG:
GR 248	19 01 45		+41 19	16.0	17.4	SR
GR 249	19 04 22		+43 51	12.5	16.0	E
GR 250	19 06 23		+43 13	14.3	16.7	RR
GR 251	19 07 04		+45 15	16.6	18.4	RR
GR 252	19 07 09		+43 19	17.6	< 18.5	UG:
GR 253	19 08 25		+43 00	16.5	18.0	Sp
GR 254	19 09 40		+41 17	17.3	18.4	Sp
GR 255	19 12 28		+41 21	15.8	< 18.5	SR
GR 256	19 12 55		+41 45	17.1	18.1	C
GR 257	19 13 34		+43 17	17.6	< 18.5	M
GR 258	19 14 27		+42 09	17.7	< 18.5	Sp

Sp= short period.

In a forthcoming paper light curves and discussion of the new variables will be reported.

Figure 1



G. ROMANO

Istituto di Astronomia  
dell'Università di Padova

References:

B.V. Kukarkin, P.N. Kholopov, Yu.N. Efremov, N.E. Kurochkin -  
The Second Catalogue of Suspected Variable Stars - Moscow 1965.