

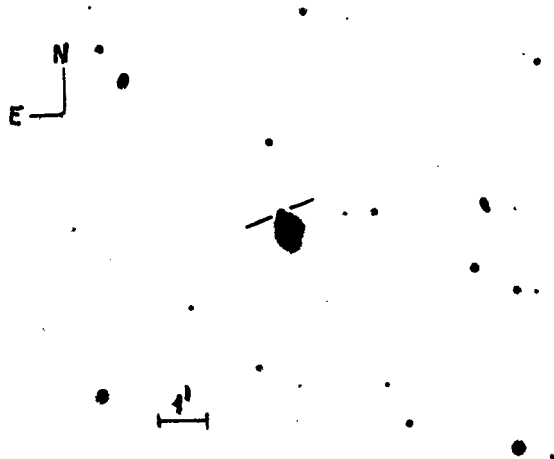
COMMISSION 27 OF THE I. A. U.
INFORMATION BULLETIN ON VARIABLE STARS

NUMBER 612

Konkoly Observatory
Budapest
1972 January 17

SUPERNOVA 1955 IN A PECULIAR GALAXY

By comparing Schmidt-plates of the Konkoly Observatory with the Palomar Sky-Survey prints a supernova has been found in a peculiar Galaxy of magnitude 14.7 on Field No 155 with the coordinates RA $11^{\text{h}}22^{\text{m}}2$, D $+30^{\circ}18'$ (1950). The brightness of the SN is about 16,5 magnitude, its distance from the center of the galaxy is E $8''4$, N $14''4$ (s. Figure).



The Galaxy is No 5 - 26 - 47 in the Morphological Catalogue of Galaxies by B.A.Voroncov-Veljaminov and A.A.Krasnogorskaya.

M. LOVAS
Konkoly Observatory
Budapest