

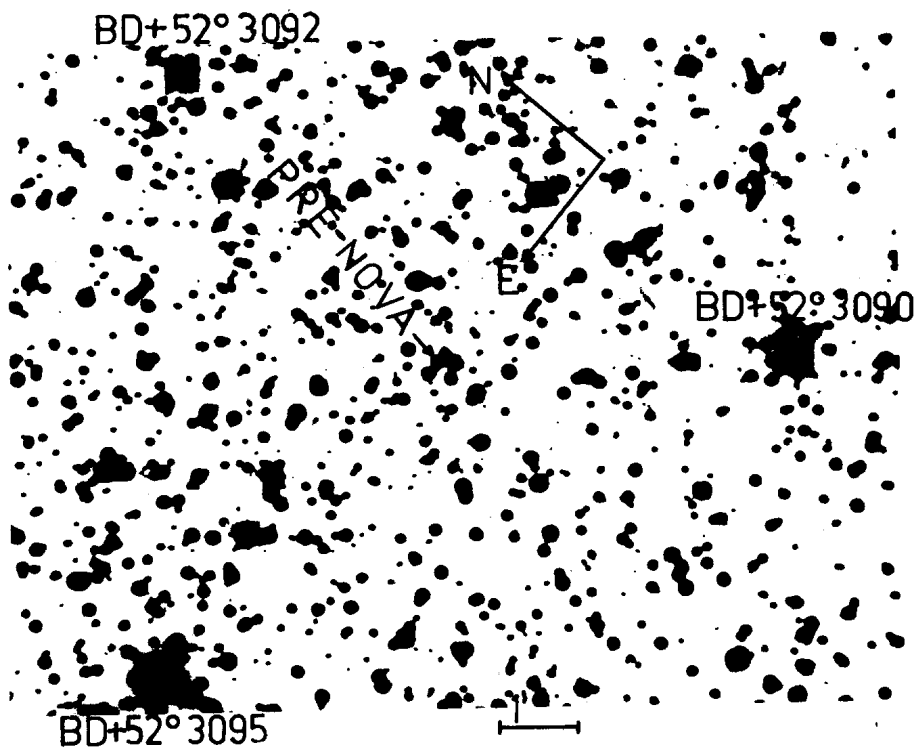
COMMISSION 27 OF THE I. A. U.
INFORMATION BULLETIN ON VARIABLE STARS

NUMBER 583

Konkoly Observatory
Budapest
1971 September 22

ACCURATE POSITION AND PRE-NOVA IDENTIFICATION FOR
NOVA CEPHEI 1971

Nova Cephei 1971 was observed with the 26-inch refractor at Leander McCormick Observatory. A plate was taken on July 29 for a position determination, and a plate of one hour exposure was taken to aid in identifying the pre-nova star in the Palomar Sky Survey. The position was determined to be R.A. (1950.0) = $22^{\text{h}}02^{\text{m}}46^{\text{s}}.85 \pm 0.01$ Dec. (1950.0) = $+53^{\circ}15' 48''.2 \pm 0''.1$.



The accompanying enlargement of the Palomar Sky Survey shows the location of the pre-nova star. The photographic magnitude of the pre-nova star was found to be 17.4 ± 0.2 as determined by measurement of its image diameter on the blue Palomar print (1).

September 2, 1971

GARY K. WALKER and MARCIA J. KEYES
Leander McCormick Observatory
Charlottesville, Virginia 22903
U.S.A.

Reference:

(1) Perek, L. 1958, Bull. Astron. Inst. Czech. 9, 39.