

COMMISSION 27 OF THE I. A. U.
INFORMATION BULLETIN ON VARIABLE STARS
NUMBER 522

Konkoly Observatory
Budapest
1971 February 22

TWO NEW VARIABLE STARS

Two new variable stars have been discovered on plates taken with a 25 cm telescope in Lyra and Lacerta.

GR 203: The coordinates of this variable are:

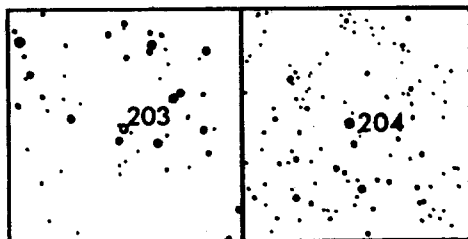
R.A. (1950) = $18^{\text{h}} 51^{\text{m}} 45^{\text{s}}$ D.(1950) = $+35^{\circ}52'$

This star is probably a cepheid (13.8 - 15.2 mpg).

GR 204: Very likely a Mira star (14.1 - \ll 15.5 mpg) with the following coordinates:

R.A. (1950) = $22^{\text{h}} 13^{\text{m}} 39^{\text{s}}$ D.(1950) = $+40^{\circ}11'$

Fig.1 gives the identification charts for the new variables (North in the top, side 20').



G. ROMANO
M. PERISSINOTTO
Istituto di Astronomia
dell'Università di Padova