

COMMISSION 27 OF THE I. A. U.  
INFORMATION BULLETIN ON VARIABLE STARS  
NUMBER 517

Konkoly Observatory  
Budapest  
1971 February 16

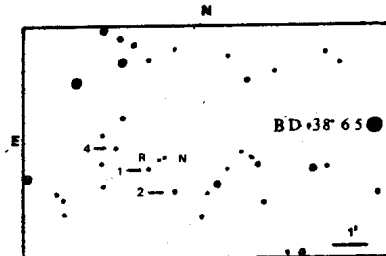
ON A POSSIBLE NOVA  
AT GREAT DISTANCE FROM THE CENTRE OF M 31.

Last year we reported on a possible nova (our No 5) found at great distance from the centre of M 31 (1). From the inspection of the corresponding region on plates obtained with the 48-inch Schmidt telescope on Palomar Mountain S. Van den Bergh recently concluded that the object No 5, recorded only on our plate of Aug. 19/20 1969, possibly refers to a flare of a faint red star found by him at the position of the suspected nova (2).

Indeed a faint star (evidently that one noticed by Van den Bergh) can be seen on the Palomar Observatory Sky Survey print of the red image plate E 398 of Oct. 3/4 1951 yet its position is slightly different from that shown in the note (1).

To check the suggested identity of these two objects the possible effect of the proper motion of the red star had to be excluded. From the measurements of the position of the red star relative to three neighbouring stars on the POSS print mentioned as well as on two photographs in yellow light obtained on Dec. 23/24 and 25/26, 1970 with the 80/120 cm Schmidt telescope of the Radioastrophysical Observatory of the Latvian Academy of Sciences it turned out that the position of the red star has not changed significantly since 1951. Besides the red star (noted R in finding chart) is situated 9" to the east and 3" to the south of nova No 5. Thus they are different objects.

Considering the great importance of the discovery of novae at enormous distance from the centre of M 31 we appeal once more to other observing astronomers who have obtained photographs about Aug. 20 1969 which included the region of nova No 5, R.A. =  $0^h 29^m, 4$ , Decl. =  $+39^\circ 02'$  (1950), to look them through in order to try to solve com-



pletely the question of the nature of the object. The position of the nova is 28" to the west and 19" to the north of the star noted by No. 1 on the finding chart.

Sternberg Astronomical Institute  
Moscow State University, Moscow  
Radioastrophysical Observatory  
Latvian Academy of Sciences, Riga  
U.S.S.R.

A.S. SHAROV  
A.K. ALKSNIS

#### References

1. A.S.Sharov, A.K.Alsnis. Astron. Circ. USSR, No 560, 1970.
2. S.Van den Bergh. Inform. Bull. Variable Stars, No 478, 1970.