

COMMISSION 27 OF THE I. A. U.
INFORMATION BULLETIN ON VARIABLE STARS

NUMBER 302

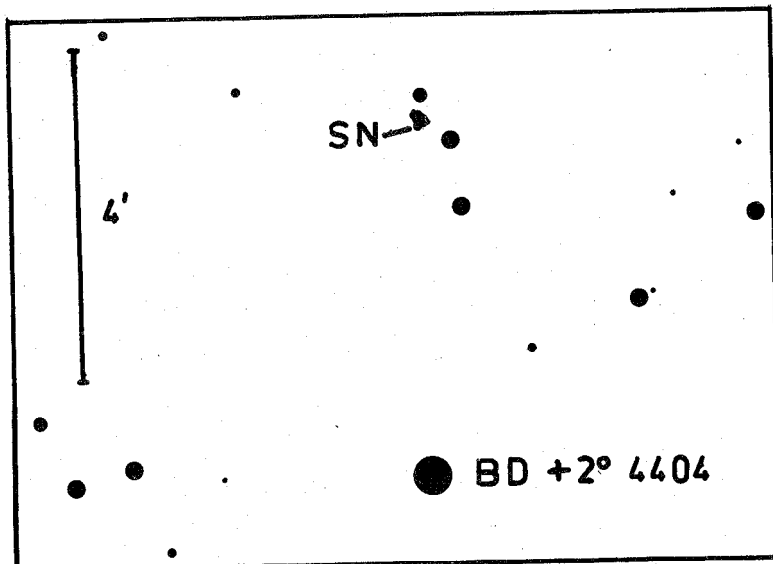
Konkoly Observatory
Budapest
1968 October 11

SUPERNOVA IN PEGASUS

On September 30, 1968 I found a supernova on a plate obtained in the night September 28/29 with the 60/90/180 cm Schmidt telescope at the mountain station of the Konkoly Observatory.

The supernova is situated about 2" SE from the center of the anonymous galaxy at RA = $21^{\text{h}} 42^{\text{m}} 3$, D = $+2^{\circ} 51'$ (1950). The identification chart shows the position of the supernova.

The brightness of the supernova was estimated of about 16.5 magn.



I. JANKOVITS
Konkoly Observatory
Budapest