

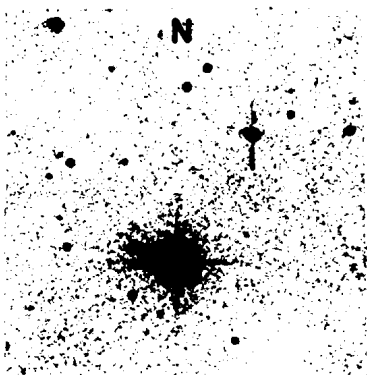
COMMISSION 27 OF THE I. A. U.  
 INFORMATION BULLETIN ON VARIABLE STARS  
 NUMBER 288

Konkoly Observatory  
 Budapest  
 1968 July 13

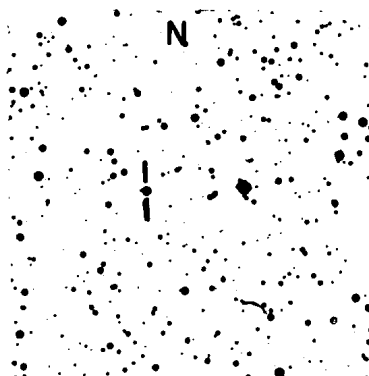
TWO FAINT RED VARIABLE STARS

During a blink survey of glass copies of the Palomar Sky Survey two faint red variable stars of large amplitude were found. The 1900 positions of these stars are: Variable 1 RA =  $02^{\text{h}} 38^{\text{m}} 46^{\text{s}}$ , D =  $+07^{\circ} 00' 9''$ ; Variable 2 RA =  $07^{\text{h}} 01^{\text{m}} 58^{\text{s}}$ , D =  $+02^{\circ} 02' 2''$ . The brightness observations of these variables are listed below:

Variable No.	Date (U.T.)	R	B
1	1954 Dec.22	11.0	13.0
	1955 Jan.15	18.5	20.5
2	1955 Mar.19	12.5	15.5
	1955 Nov.23	17.5	20



V1



V2

The identification charts for each star are 5' square. The brightest stars on the finding charts for variables No.1 and No. 2 are BD +6°413 and BD +2°1553 respectively.

David Dunlap Observatory  
University of Toronto  
Richmond Hill, Ontario  
Canada

CHECK-SEN CHAI  
GRETCHEN L.HAGEN