

COMMISSION 27 OF THE I. A. U
 INFORMATION BULLETIN ON VARIABLE STARS
 NUMBER 120

Konkoly Observatory
 Budapest
 14 February 1966

BRIGHT SOUTHERN BV-STARS

On sky patrol plates of Bamberg Southern-Station 20 further stars were found whose variability seems to be real as can be seen from the material available till now.

BV 775 = CoD -30° 11826 (8 ^m .4)	= HD 131 750 (A2)	A _{pg} = 0 ^m .35
BV 776 = CoD -65° 1949 (8 ^m .0)	= HD 137 626 (G5)	A _{pg} = 0 ^m .3
BV 777 = CoD -65° 1989 (9 ^m .2)	= HD 139 535 (Mb)	A _{pg} = 0 ^m .35
= K3π 2400		
BV 778 = 1900: 15 ^h 50 ^m 31 ^s .2 -16°52'2	Ident. Chart No. 1	A _{pg} = 0 ^m .35
BV 779 = CoD -75° 922 (8 ^m .0)	= HD 148 891 (A0)	A _{pg} = 0 ^m .4
BV 780 = 1900: 17 ^h 7 ^m 8 ^s .8 -16°41'2	Ident. Chart No. 2	A _{pg} = 0 ^m .4
BV 781 = 1900: 17 ^h 34 ^m 19 ^s .2 -45°31'3	Ident. Chart No. 3	A _{pg} = 0 ^m .3
BV 782 = CoD -63° 1310 (8 ^m .5)	= HD 162 933 (Ma)	A _{pg} = 0.3
= K3π 3543		
BV 783 = 1900: 17 ^h 48 ^m 51 ^s .0 -31°41'5	Ident. Chart No. 4	A _{pg} = 0 ^m .35
BV 784 = CoD -36° 12423 (3 ^m .0)	= HD 167 618 (Mb)	A _{pg} = 0 ^m .2
BV 785 = BD -16° 4836 (7 ^m .8)	= HD 168 701 (K0)	A _{pg} = 0 ^m .4
	= HD 168 702 (A)	A _{pg} = 0 ^m .4
BV 786 = CoD -33° 13269 (8 ^m .0)	= HD 170 280 (B9)	A _{pg} = 0 ^m .2

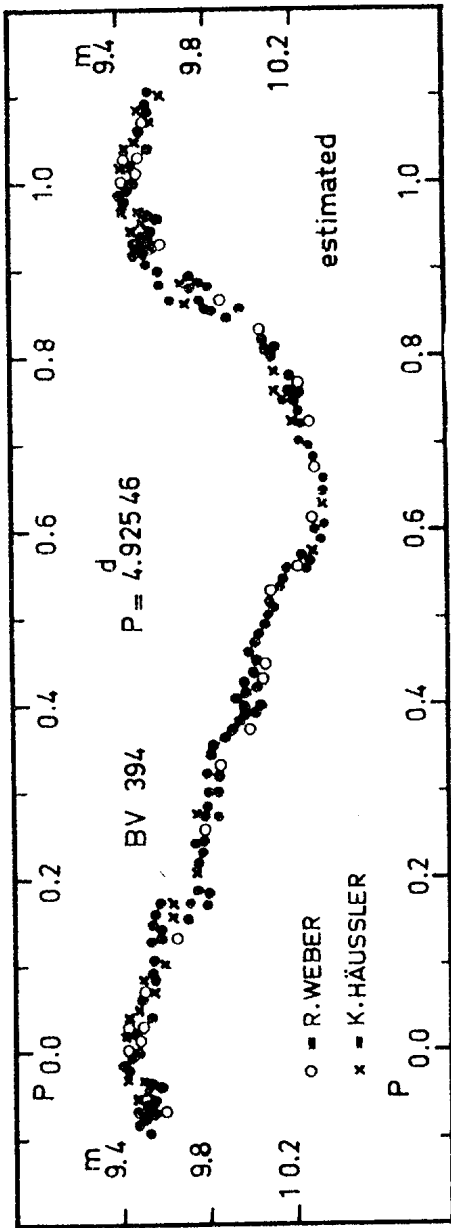
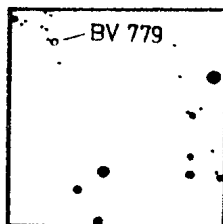
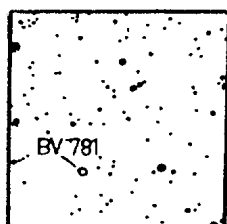


Abb. 1

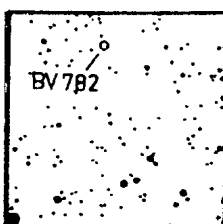
IDENT. CHARTS



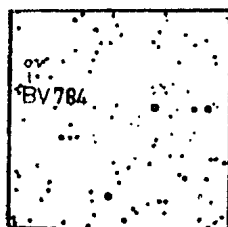
No. 1



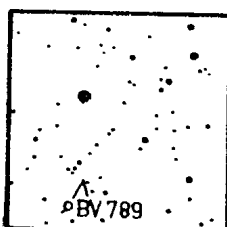
No. 2



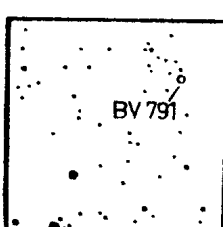
No. 3



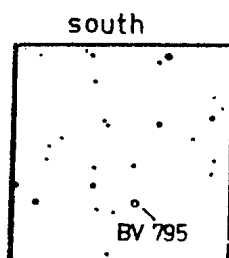
No. 4



No. 5



No. 6



north

No. 7

BV 787 = CoD $-62^{\circ}1254 (4^{\text{m}}.5)$ = HD 173 948 (B2) $A_{\text{pg}} = 0^{\text{m}}.45$
 = K3π 101 766
 BV 788 = 1900: $19^{\text{h}}26^{\text{m}}40^{\text{s}}.6 -61^{\circ}33'8$ Ident. Chart No. 5 $A_{\text{pg}} = 0^{\text{m}}.25$
 BV 789 = CoD $-24^{\circ}15680 (9^{\text{m}}.3)$ = HD 188 297 (A_o) $A_{\text{pg}} = 0^{\text{m}}.4$
 BV 790 = 1900: $19^{\text{h}}54^{\text{m}}14^{\text{s}} -25^{\circ}37'7$ Ident. Chart No. 6 $A_{\text{pg}} = 0^{\text{m}}.3$
 BV 791 = CoD $-50^{\circ}13373 (7^{\text{m}}.6)$ = HD 204 370 (A2) $A_{\text{pg}} = 0^{\text{m}}.6$
 BV 792 = CoD $-81^{\circ}831 (5^{\text{m}}.6)$ = HD 210 967 (Mb) $A_{\text{pg}} = 0^{\text{m}}.3$
 BV 793 = CoD $-57^{\circ}8564 (8^{\text{m}}.8)$ = HD 212 936 (F5) $A_{\text{pg}} = 0^{\text{m}}.35$
 BV 794 = 1900: $23^{\text{h}}27^{\text{m}}9^{\text{s}}.1 -17^{\circ}57'9$ Ident. Chart No. 7 $A_{\text{pg}} = 0^{\text{m}}.25$

Bamberg, Reims-Observatory,
 12 January 1966

W. STROHMEIER
 H. FISCHER H. OTT