

COMMISSION 27 OF THE I. A. U
 INFORMATION BULLETIN ON VARIABLE STARS
 NUMBER 117

Konkoly Observatory
 Budapest
 27 December 1965

FAINT SOUTHERN BV-STARS

On sky patrol plates, taken with the 10 inch Metcalf of the Boyden Observatory, South Africa, further stars were found whose variability seems to be real as can be seen from the material available till now. - The 10 inch Metcalf has been at the disposal of the Bamberg Observer by courtesy of the Boyden Observatory.

BV 758 = 1900: $7^{\text{h}}34^{\text{m}}08^{\text{s}}$ $-85^{\circ}29'7$ Ident. Chart No. 1 $A_{\text{pg}} = 0^{\text{m}}.4$
 BV 759 = 1900: $7^{\text{h}}47^{\text{m}}04^{\text{s}}$ $-84^{\circ}18.1$ Ident. Chart No. 2 $A_{\text{pg}} = 0^{\text{m}}.6$
 BV 760 = 1900: $9^{\text{h}}53^{\text{m}}57^{\text{s}}$ $-79^{\circ}06.4$ Ident. Chart No. 3 $A_{\text{pg}} = 0^{\text{m}}.6$
 BV 761 = 1900: $10^{\text{h}}28^{\text{m}}26^{\text{s}}$ $-87^{\circ}07.4$ Ident. Chart No. 4 $A_{\text{pg}} = 0^{\text{m}}.3$
 BV 762 = 1900: $10^{\text{h}}49^{\text{m}}37^{\text{s}}$ $-83^{\circ}36.7$ Ident. Chart No. 5 $A_{\text{pg}} = 0^{\text{m}}.5$
 BV 763 = 1900: $11^{\text{h}}00^{\text{m}}17^{\text{s}}$ $-74^{\circ}22.8$ Ident. Chart No. 6 $A_{\text{pg}} = >1^{\text{m}}.1$

Min = JD 243 8877.325 + 2.^d639 . E min = below the limit

EA

Light-curve Fig. 1

BV 764 = Cape $-86^{\circ}0258$ ($10^{\text{m}}.1$) = KT31866 $A_{\text{pg}} = 0^{\text{m}}.5$
 BV 765 = 1900: $12^{\text{h}}54^{\text{m}}12^{\text{s}}$ $-79^{\circ}11'2$ Ident. Chart No. 7 $A_{\text{pg}} = 1^{\text{m}}.0$

Max = JD 243 8472.320 + 1.^d238 . E

Cepheid

Light-curve Fig. 2

BV 766 = 1900:	12 ^h 54 ^m 55 ^s	-76°05'4	Ident. Chart No. 8	A	= 0 ^m .7
BV 767 = 1900:	12 ^h 58 ^m 02 ^s	-83°15.9	Ident. Chart No. 9	A _{pg}	= 0 ^m .6
BV 768 = 1900:	13 ^h 13 ^m 26 ^s	-85°21.1	Ident. Chart No. 10	A	= 0 ^m .3
BV 769 = 1900:	13 ^h 42 ^m 52 ^s	-79°31.1	Ident. Chart No. 11	A _{pg}	= 0 ^m .3
BV 770 = 1900:	13 ^h 53 ^m 22 ^s	-81°07.1	Ident. Chart No. 12	A	= 0 ^m .4
BV 771 = 1900:	14 ^h 39 ^m 02 ^s	-79°15.6	Ident. Chart No. 13	A _{pg}	= 0 ^m .9

Max = JD 243 8877.345 + 1.^d4236 . E

Cepheid

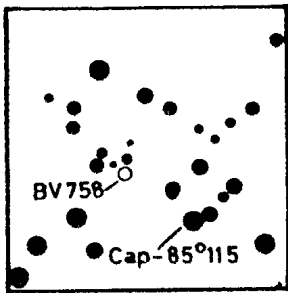
Light-curve Fig. 3

BV 772 = 1900:	15 ^h 28 ^m 46 ^s	-87°13'6	Ident. Chart No. 14	A	= 0 ^m .3
BV 773 = 1900:	17 ^h 56 ^m 43 ^s	-84°24.6	Ident. Chart No. 15	A _{pg}	= 0 ^m .4
BV 774 = 1900:	21 ^h 46 ^m 41 ^s	-84°44.0	Ident. Chart No. 16	A _{pg}	= 0 ^m .6

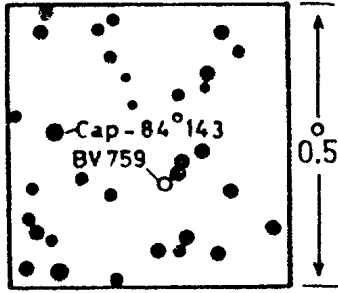
December 1965

R. KNIGGE
 Reims-Observatory
 Bamberg

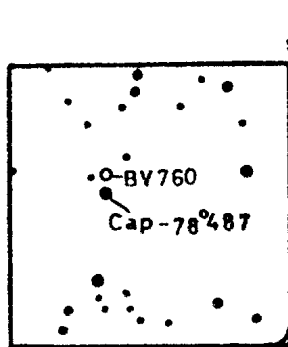
IDENT. CHARTS



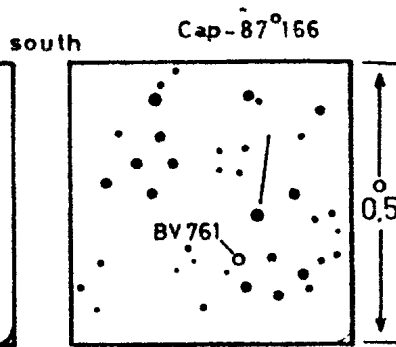
NO.1



NO.2

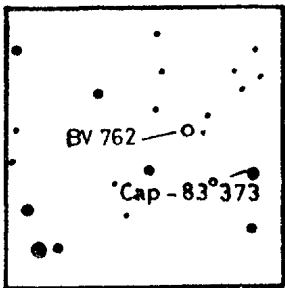


NO.3

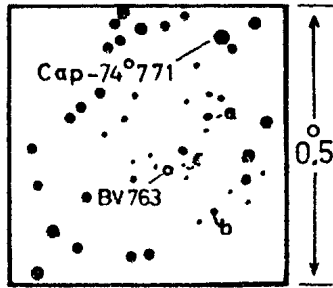


NO.4

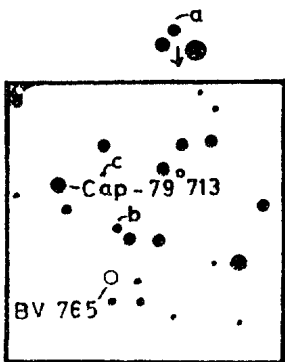
IDENT. CHARTS



NO.5



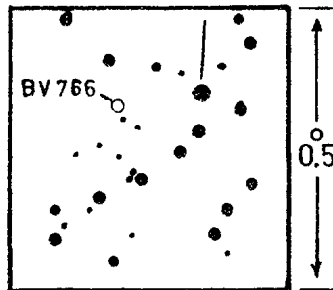
NO.6



NO.7

south

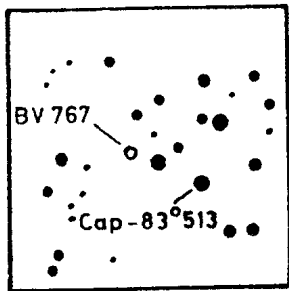
Cap-75°846



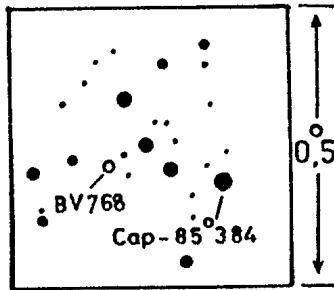
NO.8

north

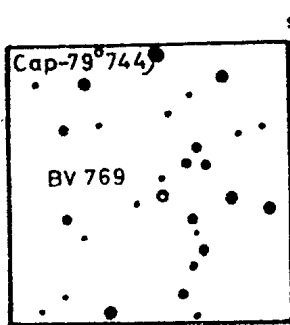
IDENT. CHARTS



NO.9

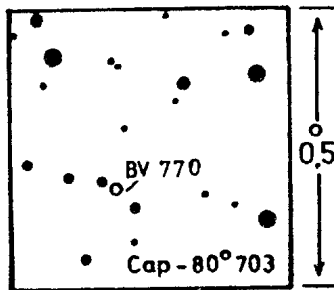


NO.10



NO.11

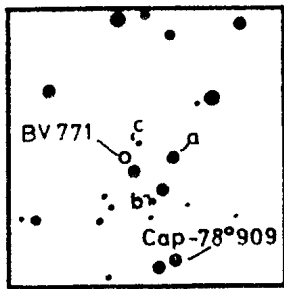
south



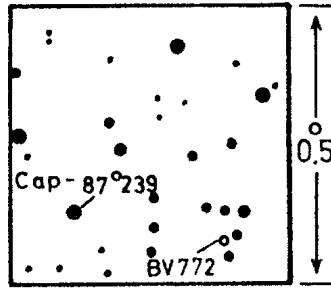
NO.12

north

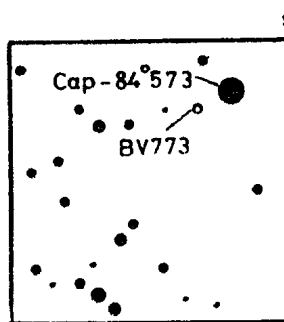
IDENT. CHARTS



NO.13

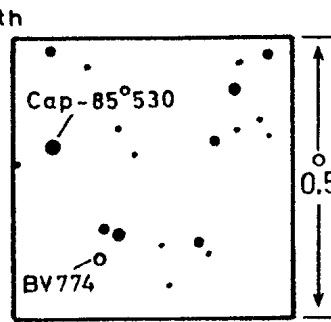


NO.14



NO.15

north



NO.16

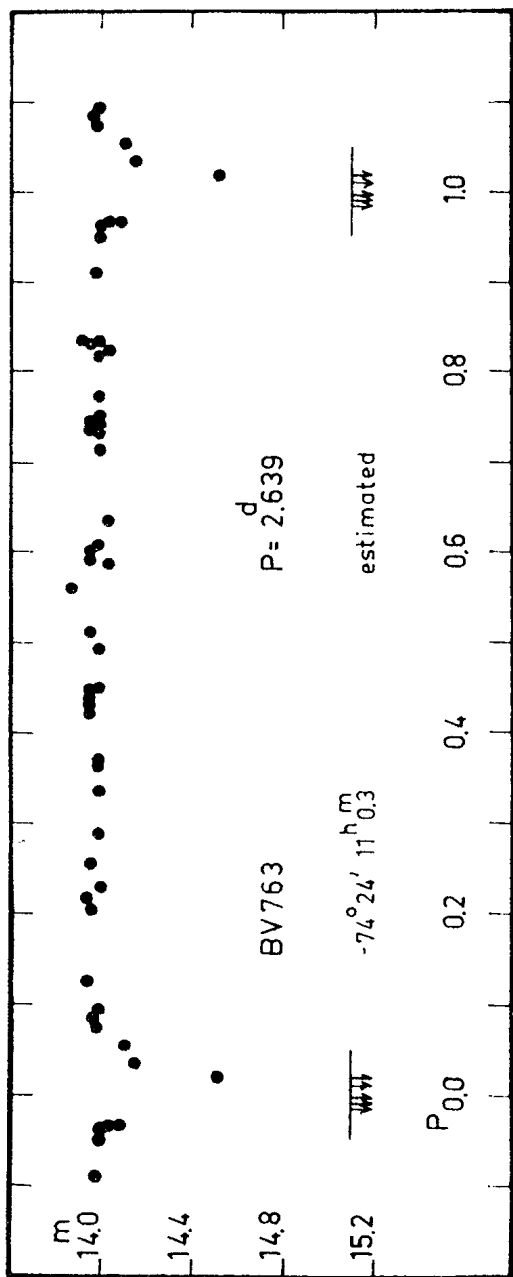


Fig.1

BV 763 = 1900: $11^{\text{h}}00^{\text{m}}17^{\text{s}}$ $-74^{\circ}22'8''$; Light-curve Fig. 1

Min = JD 243 8877.325 + 2.639 . E, EA, Ampl. $> 1^{\text{m}}1$

Comparison stars:

a = $13^{\text{m}}.6$ estimated

b = $14^{\text{m}}.2$ estimated Ident. Chart No. 6

c = $14^{\text{m}}.4$ estimated

Individual minima (fainter than $15^{\text{m}}.10$)

Minima	E	O - C
243 8877.274	0	-0.051
.297	0	-0.028
.361	0	+0.036
8885.209	3	-0.033
.274	3	+0.032

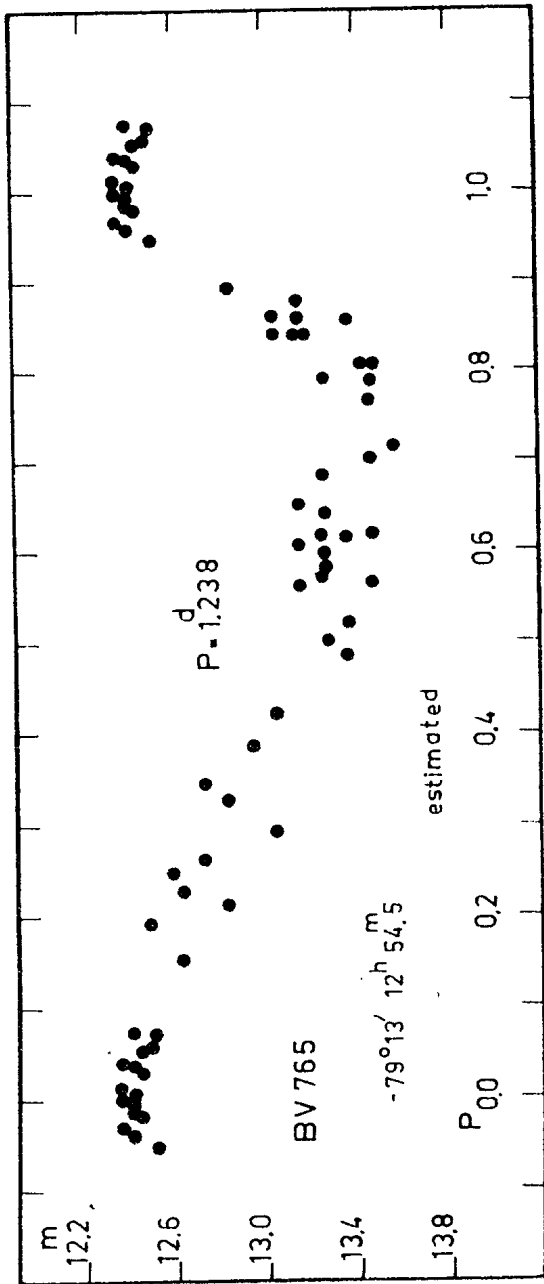


Fig.2

BV 765 = 1900: 12^h54^m12^s -79°11'2 ; Light-curve Fig. 2

Max = JD 243 8472.320 + 1.^d238 . E, Cepheid, Ampl. 1.^m0

Comparison stars:

a = 12.^m3 estimated
 b = 12.^m6 estimated Ident. Chart No. 7
 c = 13.^m5 estimated

Individual maxima (brighter than 12.^m50)

Maxima	E	O - C
243 8472.339	0	+0.019
.360	0	+0.040
.382	0	+0.062
8878.338	328	-0.046
.359	328	-0.025
.403	328	+0.017
8883.319	332	-0.017
.384	332	+0.048
.406	332	+0.070
8904.355	349	-0.027
8914.281	357	-0.005
.303	357	+0.017
.324	357	+0.038

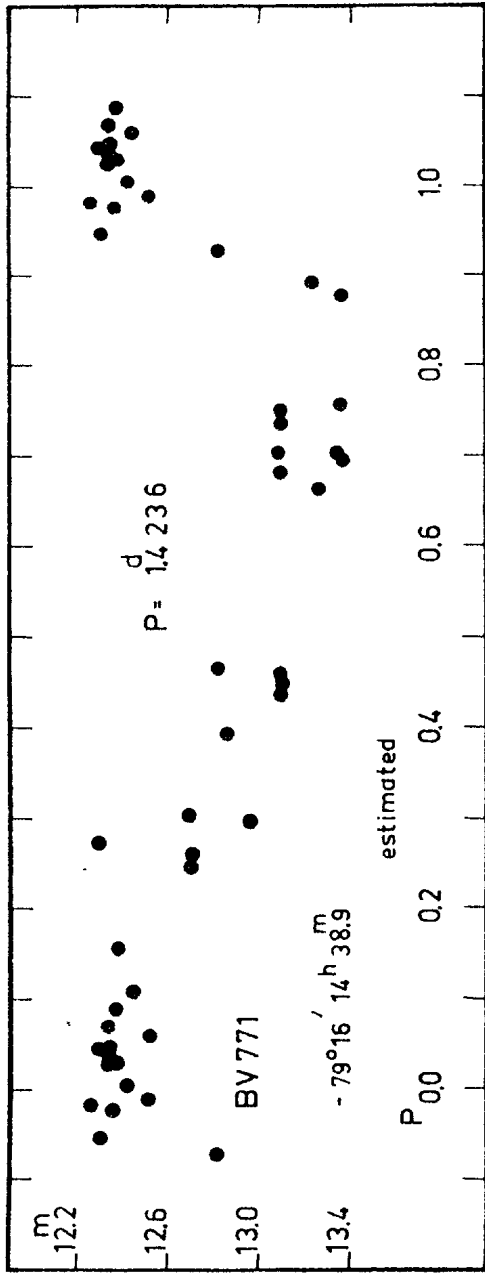


Fig.3

BV 771 = 1900: 14^h39^m02^s -79°15'6 ; Light-curve Fig. 3

Max = JD 243 8877.345 + 1.^d4236 . E, Cepheid, Ampl. 0^m.95

Comparison stars:

a = Cape -79°788	10. ^m 0 estimated	Ident. Chart No. 13
b =	12 . 6 estimated	
c =	13 . 6 estimated	

Individual maxima (fainter than 12.^m40)

Maxima	E	O - C
243 8877.383	0	+0.038
.404	0	+0.059
.448	0	+0.103
8880.408	2	+0.186
8884.378	5	-0.085
.422	5	-0.041
.443	5	-0.020
8904.355	19	-0.038
.419	19	+0.026
8914.389	26	+0.031
.409	26	+0.051