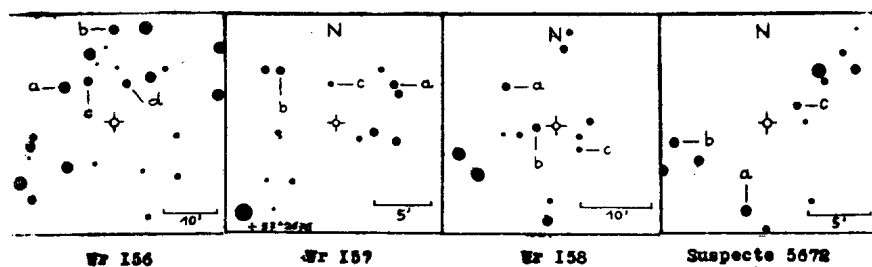


COMMISSION 27 OF THE I. A. U
 INFORMATION BULLETIN ON VARIABLE STARS
 NUMBER 88

Konkoly Observatory
 Budapest
 3 April 1965

NOUVELLES ETOILES VARIABLES

| Dés. | α (1900,0) | δ | max ^{mp} | min | type | nombre d'observ. |
|---------------|---|-----------|-------------------|------|------|------------------|
| Wr 156 | 22 ^h 17 ^m 17 ^s | + 45° 09' | 9,8 | 10,7 | I | 72 |
| Wr 157 | 22 ^h 58 ^m 17 ^s | + 58° 08' | 11,3 | 12,0 | I | 56 |
| Wr 158 | 23 ^h 18 ^m 05 ^s | + 58° 46' | 11,2 | 12,2 | I | 56 |
| Susp. 5672 | 23 ^h 06 ^m 00 ^s | + 60° 43' | 11,6 | 12,6 | I | 56 |



Etoiles de comparaison

| Wr 156 | Wr 157 | Wr 158 | Susp. 5672 |
|----------|--------|--------|------------|
| a = 9,5 | 11,0 | 11,2 | 11,6 |
| b = 10,0 | 11,4 | 11,5 | 12,0 |
| c = 10,3 | 12,0 | 12,2 | 12,6 |
| d = 10,7 | - | - | - |

Remarques

Wr 156 = BD +44^o4106 = HD 212185 Sp Mb

Wr 158 = BD +58^o2583

Susp 5672 T.E.Espin. AN 137, 369-376, 1895. = DO 42604 (M5)
= Zi 2124

Des détails seront publiés dans le "Bulletin de la Station
Astrophotographique de Mainterne".

ROGER WEBER

Station Astrophotographique
de Mainterne

GALAXIES WITH FREQUENT APPEARANCE OF SUPERNOVAE

The galaxy NGC 2841 should be added to the list of Prof. B.V.Kukarkin. Type Sb, M = -19,9, n = 2, T = 45 years. The first supernova has exploded in 1912 and the second, which is of type I, in 1957. Evidently this addition does not change the valuable conclusions of Prof. B.V. Kukarkin about giant galaxies and their supernovae.

Ch. BERTAUD

Observatoire de Meudon