

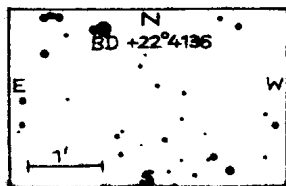
COMMISSION 27 OF THE I. A. U
 INFORMATION BULLETIN ON VARIABLE STARS
 NUMBER 80

Konkoly Observatory
 Budapest
 29 January 1965

NEW VARIABLES OF U GEM TYPE

On plates, taken with the Schmidt-Telescope 134/200/400 cm of Karl-Schwarzschild Observatory, covering 11.5 square degrees, centered at 28 Vul, I found a variable in the position

1855.0 20^h32^m10^s +22^o12'1
 1900.0 20 34 9 +22 21.5



S 9068 Vul, Observations

1964 Aug 6	242	8614.46	[19 ^m
" 8		8616.48	~20
" 12		8620.52	~20
" 14		8622.48	15
" 27		8635.34	16
Sep 1		8640.40	19
" 2		8641.40	19.5
" 3		8642.42	19.5
" 11		8650.43	[19
" 13		8652.39	19.5
" 14		8653.37	[19.5

The increase of $\sim 5^m$ in 2^d and the rather steep decline 13^d later suggest that the star might have been much brighter in the meantime. Because of the moonlight there is only a slight hope that the region might have been photographed elsewhere.

The place of the star is covered by 173 plates of the 140 mm Triplet from 1928 to 1964. The variable is not separated from the s. p. star 15^m . On 16 plates it might be visible, but only on 2 plates it is rather certain: 1930 Aug 20 $15^m.5$, and 1955 Sep 22 15^m . It has never been observed brighter than 15^m . The investigation of 447 Sky Patrol plates from 1929 to 1964 with limits between 12^m and 14^m gave no positive result. On Palomar Sky Atlas the star is hardly visible on the blue, invisible on the red plate.

Three more variables of U Gem type were found in the area around τ Cyg:

	RA	1855.0	D	
S 9108 Cyg	21 ^h 1 ^m 58 ^s	+36° 39' 1	13. ^m 5	- 18 ^m
S 9110 Cyg	21 2 26	+36 14.2	15.5	- 18
S 9113 Cyg	21 5 19	+38 21.7	18	- [20

Two other areas centered at ϵ Aql and ϵ Cyg did not yield any new U Gem type variables so far.

C. HOFFMEISTER
Sonneberg Observatory